

# BUILDING APPROVALS

VICTORIA

EMBARGO: 11:30AM (CANBERRA TIME) FRI 11 MAY 2001

## MARCH KEY FIGURES

|                         | Jan 2001                            | Feb 2001                            | Mar 2001                            |
|-------------------------|-------------------------------------|-------------------------------------|-------------------------------------|
| Dwelling units approved |                                     |                                     |                                     |
| Original                | 2 607                               | 3 212                               | 3 394                               |
| Seasonally adjusted     | 3 172                               | 3 093                               | 3 113                               |
| Trend                   | 3 114                               | 3 221                               | 3 269                               |
| .....                   |                                     |                                     |                                     |
|                         | % change<br>Dec 2000 to<br>Jan 2001 | % change<br>Jan 2001 to<br>Feb 2001 | % change<br>Feb 2001 to<br>Mar 2001 |
| Dwelling units approved |                                     |                                     |                                     |
| Original                | -15.8                               | 23.2                                | 5.7                                 |
| Seasonally adjusted     | -8.4                                | -2.5                                | 0.6                                 |
| Trend                   | 4.9                                 | 3.4                                 | 1.5                                 |

## MARCH KEY POINTS

### TREND ESTIMATES

- The trend estimate for total dwellings approved has increased for the last six consecutive months. However, the rate of growth has slowed, with March 2001 rising 1.5%, following rises of 4.9% in January and 3.4% in February.
- The trend estimate for private sector houses approved has increased in each of the last six months, but the rate of growth has slowed. The estimate rose 1.8% in March 2001, following rises of 4.7% in January and 3.3% in February.

### SEASONALLY ADJUSTED ESTIMATES

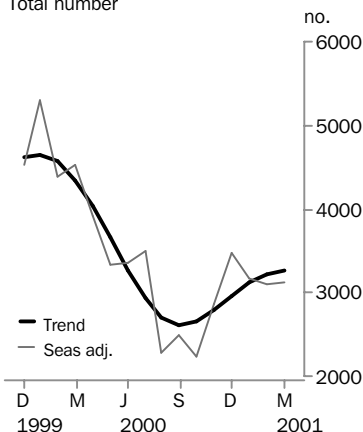
- The seasonally adjusted estimate for total dwellings approved fell by 8.4% in January 2001 and by 2.5% in February 2001. There was a slight rise of 0.6% in March to 3,113.
- The seasonally adjusted estimate for private sector house approvals increased in both January 2001 (by 7.6%) and February 2001 (by 16.4%). However, it fell 15.8% to 2,012 in March 2001.

### ORIGINAL ESTIMATES

- In original terms the number of dwellings approved in the March quarter 2001 (9,213 dwellings) was 11.2% greater than the previous quarter. Both house and other dwelling approval numbers rose in the March quarter 2001.
- The total value of building work approved in the March quarter 2001 (\$2686.1 million) was 15.8 greater than the previous quarter.

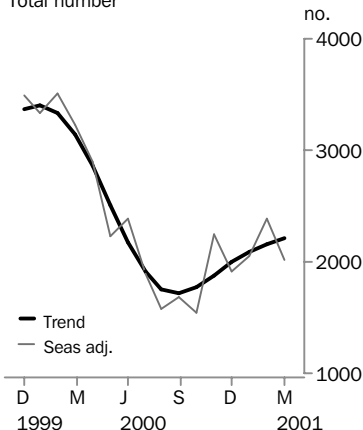
### Dwelling units approved

Total number



### Private sector houses approved

Total number



- For further information about these and related statistics, contact Andrea Woods on Adelaide 08 8237 7350 or the National Information Service on 1300 135 070.

# NOTES

## FORTHCOMING ISSUES

| <i>ISSUE</i>   | <i>RELEASE DATE</i> |
|----------------|---------------------|
| June 2001      | 7 August 2001       |
| September 2001 | 7 November 2001     |



## CHANGES IN THIS ISSUE

There are no changes in this issue.



## DATA NOTES

The effects of the increased First Home Owners Grant, announced during March, are unlikely to have impacted on approval series in this reporting period.



## REVISIONS THIS MONTH

Revisions to data for Total Dwelling Units have been made since the December issue of this publication (+93 in September 2000 and -26 in December 2000).

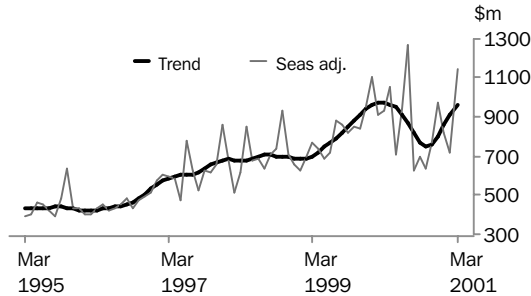


Zia ABBASI  
Regional Director, Victoria

# VALUE OF BUILDING APPROVED

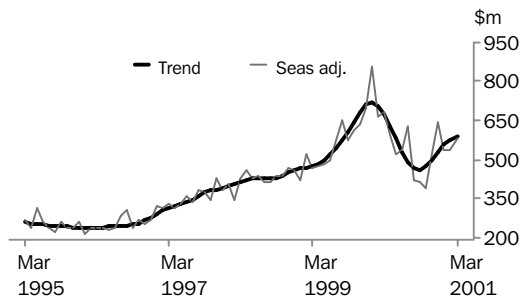
## VALUE OF TOTAL BUILDING

The trend estimate for the value of total building has increased for the past five months after seven consecutive months of decline from March to October 2000.



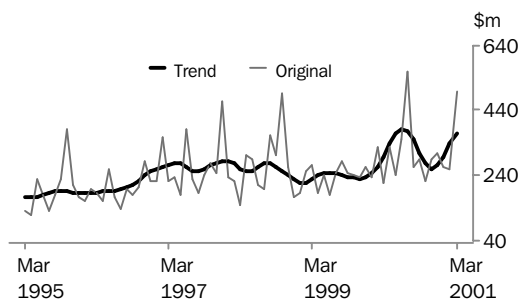
## VALUE OF RESIDENTIAL BUILDING

The trend estimate for the value of residential building fell in consecutive months from February to September 2000 but has increased in each of the six months since. However, the rate of growth has slowed in the last two months.



## VALUE OF NON-RESIDENTIAL BUILDING

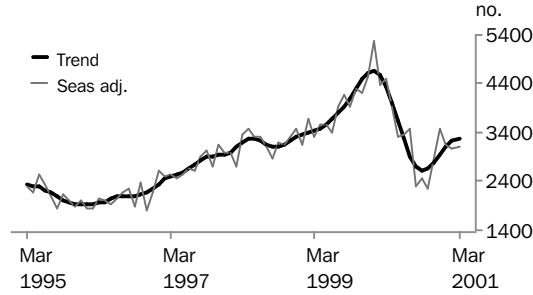
The trend for the value of non-residential building increased strongly in the March quarter, following five months of decline from July 2000.



# DWELLINGS APPROVED

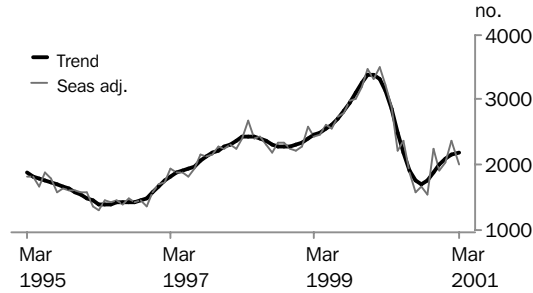
## TOTAL DWELLING UNITS

The trend estimate for total dwelling units approved has increased each month from October 2000. Up to September the trend had fallen for eight consecutive months.



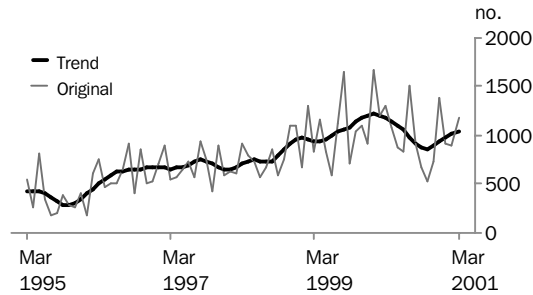
## PRIVATE SECTOR HOUSES

The trend estimate for private sector houses approved has increased each month from October 2000. Up to September the trend had fallen for eight consecutive months.



## OTHER DWELLINGS

The trend estimate for other dwellings approved has increased each month from November 2000. Up to October the trend had fallen for nine consecutive months.



# WHAT IF...? REVISIONS TO TREND ESTIMATES

## EFFECT OF NEW SEASONALLY ADJUSTED ESTIMATES ON TREND ESTIMATES

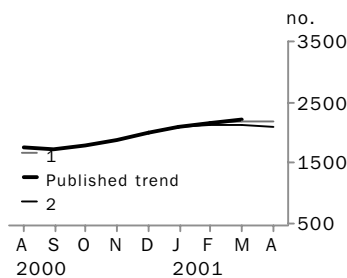
Readers should exercise care when interpreting trend estimates. The last six trend estimates, in particular, are likely to be revised when new seasonally adjusted estimates become available.

### TREND REVISIONS

Generally, the greater the volatility of the original series, the larger the size of the revisions to trend estimates. Analysis of the building approval original series has shown that they can be revised substantially. As a result, some months can elapse before turning points in the trend series are reliably identified.

The graphs and tables which follow present the effect of two possible scenarios on the previous trend estimates: that the April seasonally adjusted estimate is higher than the March estimate by 5% for the number of private sector houses approved and 8% for total dwelling units approved; and that the April seasonally adjusted estimate is lower than the March estimate by 5% for the number of private sector houses approved and 8% for total dwelling units approved. These percentages were chosen because they represent the average absolute monthly percentage change for these series over the last ten years.

### PRIVATE SECTOR HOUSES



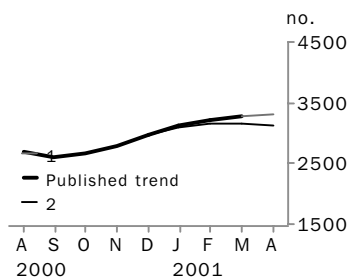
|               | TREND AS PUBLISHED |          |
|---------------|--------------------|----------|
|               | no.                | % change |
| November 2000 | 1 884              | 6.1      |
| December 2000 | 2 003              | 6.3      |
| January 2001  | 2 096              | 4.7      |
| February 2001 | 2 164              | 3.3      |
| March 2001    | 2 204              | 1.8      |
| April 2001    | n.y.a.             | n.y.a.   |

### WHAT IF NEXT MONTH'S SEASONALLY ADJUSTED ESTIMATE:

**1** rises by 5% on Mar 2001  
**2** falls by 5% on Mar 2001

|               | <b>1</b> |          | <b>2</b> |          |
|---------------|----------|----------|----------|----------|
|               | no.      | % change | no.      | % change |
| November 2000 | 1 881    | 6.2      | 1 888    | 6.4      |
| December 2000 | 2 002    | 6.4      | 2 005    | 6.2      |
| January 2001  | 2 092    | 4.5      | 2 083    | 3.8      |
| February 2001 | 2 142    | 2.4      | 2 112    | 1.4      |
| March 2001    | 2 169    | 1.2      | 2 111    | 0.0      |
| April 2001    | 2 181    | 0.6      | 2 094    | -0.8     |

### TOTAL DWELLING UNITS



|               | TREND AS PUBLISHED |          |
|---------------|--------------------|----------|
|               | no.                | % change |
| November 2000 | 2 796              | 5.2      |
| December 2000 | 2 969              | 6.2      |
| January 2001  | 3 114              | 4.9      |
| February 2001 | 3 221              | 3.4      |
| March 2001    | 3 269              | 1.5      |
| April 2001    | n.y.a.             | n.y.a.   |

### WHAT IF NEXT MONTH'S SEASONALLY ADJUSTED ESTIMATE:

**1** rises by 8% on Mar 2001  
**2** falls by 8% on Mar 2001

|               | <b>1</b> |          | <b>2</b> |          |
|---------------|----------|----------|----------|----------|
|               | no.      | % change | no.      | % change |
| November 2000 | 2 782    | 5.1      | 2 799    | 5.4      |
| December 2000 | 2 963    | 6.5      | 2 972    | 6.2      |
| January 2001  | 3 123    | 5.4      | 3 101    | 4.3      |
| February 2001 | 3 219    | 3.1      | 3 147    | 1.5      |
| March 2001    | 3 276    | 1.7      | 3 138    | -0.3     |
| April 2001    | 3 318    | 1.3      | 3 111    | -0.9     |

## DWELLING UNITS APPROVED

| Month               | HOUSES.....           |              | OTHER DWELLINGS....   |              | TOTAL DWELLING UNITS... |              |
|---------------------|-----------------------|--------------|-----------------------|--------------|-------------------------|--------------|
|                     | <i>Private sector</i> | <i>Total</i> | <i>Private sector</i> | <i>Total</i> | <i>Private sector</i>   | <i>Total</i> |
|                     | <i>no.</i>            | <i>no.</i>   | <i>no.</i>            | <i>no.</i>   | <i>no.</i>              | <i>no.</i>   |
| ORIGINAL            |                       |              |                       |              |                         |              |
| <b>2000</b>         |                       |              |                       |              |                         |              |
| January             | 2 523                 | 2 543        | 1 675                 | 1 682        | 4 198                   | 4 225        |
| February            | 3 533                 | 3 568        | 1 166                 | 1 206        | 4 699                   | 4 774        |
| March               | 3 557                 | 3 569        | 1 305                 | 1 305        | 4 862                   | 4 874        |
| April               | 2 555                 | 2 582        | 1 050                 | 1 073        | 3 605                   | 3 655        |
| May                 | 2 529                 | 2 573        | 880                   | 886          | 3 409                   | 3 459        |
| June                | 2 382                 | 2 412        | 825                   | 845          | 3 207                   | 3 257        |
| July                | 1 842                 | 1 859        | 1 485                 | 1 506        | 3 327                   | 3 365        |
| August              | 1 809                 | 1 826        | 878                   | 920          | 2 687                   | 2 746        |
| September           | 1 843                 | 1 875        | 676                   | 676          | 2 519                   | 2 551        |
| October             | 1 518                 | 1 563        | 510                   | 536          | 2 028                   | 2 099        |
| November            | 2 360                 | 2 362        | 712                   | 725          | 3 072                   | 3 087        |
| December            | 1 701                 | 1 717        | 1 380                 | 1 380        | 3 081                   | 3 097        |
| <b>2001</b>         |                       |              |                       |              |                         |              |
| January             | 1 649                 | 1 680        | 898                   | 927          | 2 547                   | 2 607        |
| February            | 2 282                 | 2 308        | 902                   | 904          | 3 184                   | 3 212        |
| March               | 2 185                 | 2 206        | 1 186                 | 1 188        | 3 371                   | 3 394        |
| SEASONALLY ADJUSTED |                       |              |                       |              |                         |              |
| <b>2000</b>         |                       |              |                       |              |                         |              |
| January             | 3 340                 | 3 381        | n.a.                  | n.a.         | 5 243                   | 5 291        |
| February            | 3 515                 | 3 551        | n.a.                  | n.a.         | 4 319                   | 4 395        |
| March               | 3 236                 | 3 252        | n.a.                  | n.a.         | 4 505                   | 4 521        |
| April               | 2 887                 | 2 919        | n.a.                  | n.a.         | 3 864                   | 3 919        |
| May                 | 2 234                 | 2 272        | n.a.                  | n.a.         | 3 278                   | 3 322        |
| June                | 2 392                 | 2 428        | n.a.                  | n.a.         | 3 309                   | 3 365        |
| July                | 1 899                 | 1 917        | n.a.                  | n.a.         | 3 463                   | 3 502        |
| August              | 1 584                 | 1 604        | n.a.                  | n.a.         | 2 229                   | 2 291        |
| September           | 1 677                 | 1 703        | n.a.                  | n.a.         | 2 454                   | 2 480        |
| October             | 1 549                 | 1 581        | n.a.                  | n.a.         | 2 179                   | 2 237        |
| November            | 2 244                 | 2 246        | n.a.                  | n.a.         | 2 844                   | 2 859        |
| December            | 1 908                 | 1 920        | n.a.                  | n.a.         | 3 453                   | 3 465        |
| <b>2001</b>         |                       |              |                       |              |                         |              |
| January             | 2 054                 | 2 112        | n.a.                  | n.a.         | 3 085                   | 3 172        |
| February            | 2 391                 | 2 419        | n.a.                  | n.a.         | 3 063                   | 3 093        |
| March               | 2 012                 | 2 041        | n.a.                  | n.a.         | 3 082                   | 3 113        |
| TREND ESTIMATES     |                       |              |                       |              |                         |              |
| <b>2000</b>         |                       |              |                       |              |                         |              |
| January             | 3 403                 | 3 437        | 1 197                 | 1 217        | 4 600                   | 4 654        |
| February            | 3 328                 | 3 359        | 1 187                 | 1 205        | 4 515                   | 4 564        |
| March               | 3 138                 | 3 169        | 1 161                 | 1 177        | 4 299                   | 4 346        |
| April               | 2 855                 | 2 885        | 1 127                 | 1 143        | 3 982                   | 4 028        |
| May                 | 2 512                 | 2 542        | 1 095                 | 1 112        | 3 607                   | 3 654        |
| June                | 2 181                 | 2 210        | 1 033                 | 1 052        | 3 214                   | 3 262        |
| July                | 1 919                 | 1 946        | 961                   | 982          | 2 880                   | 2 928        |
| August              | 1 759                 | 1 782        | 900                   | 921          | 2 659                   | 2 703        |
| September           | 1 718                 | 1 739        | 848                   | 868          | 2 566                   | 2 607        |
| October             | 1 775                 | 1 795        | 844                   | 862          | 2 619                   | 2 657        |
| November            | 1 884                 | 1 906        | 875                   | 890          | 2 759                   | 2 796        |
| December            | 2 003                 | 2 028        | 929                   | 941          | 2 932                   | 2 969        |
| <b>2001</b>         |                       |              |                       |              |                         |              |
| January             | 2 096                 | 2 125        | 979                   | 989          | 3 075                   | 3 114        |
| February            | 2 164                 | 2 195        | 1 018                 | 1 026        | 3 182                   | 3 221        |
| March               | 2 204                 | 2 237        | 1 025                 | 1 032        | 3 229                   | 3 269        |

## DWELLING UNITS APPROVED, Percentage Change

| Month   | HOUSES.....    |       | OTHER DWELLINGS.... |       | TOTAL DWELLING UNITS... |       |
|---|----------------|-------|---------------------|-------|-------------------------|-------|
|   | Private sector | Total | Private sector      | Total | Private sector          | Total |
| ORIGINAL (% change from preceding month)            |                |       |                     |       |                         |       |
| <b>2000</b>   |                |       |                     |       |                         |       |
| January   | -22.6          | -23.0 | 88.0                | 83.0  | 1.2                     | 0.1   |
| February  | 40.0           | 40.3  | -30.4               | -28.3 | 11.9                    | 13.0  |
| March   | 0.7            | 0.0   | 11.9                | 8.2   | 3.5                     | 2.1   |
| April   | -28.2          | -27.7 | -19.5               | -17.8 | -25.9                   | -25.0 |
| May   | -1.0           | -0.3  | -16.2               | -17.4 | -5.4                    | -5.4  |
| June  | -5.8           | -6.3  | -6.3                | -4.6  | -5.9                    | -5.8  |
| July  | -22.7          | -22.9 | 80.0                | 78.2  | 3.7                     | 3.3   |
| August  | -1.8           | -1.8  | -40.9               | -38.9 | -19.2                   | -18.4 |
| September   | 1.9            | 2.7   | -23.0               | -26.5 | -6.3                    | -7.1  |
| October   | -17.6          | -16.6 | -24.6               | -20.7 | -19.5                   | -17.7 |
| November  | 55.5           | 51.1  | 39.6                | 35.3  | 51.5                    | 47.1  |
| December  | -27.9          | -27.3 | 93.8                | 90.3  | 0.3                     | 0.3   |
| <b>2001</b>   |                |       |                     |       |                         |       |
| January   | -3.1           | -2.2  | -34.9               | -32.8 | -17.3                   | -15.8 |
| February  | 38.4           | 37.4  | 0.4                 | -2.5  | 25.0                    | 23.2  |
| March   | -4.3           | -4.4  | 31.5                | 31.4  | 5.9                     | 5.7   |
| SEASONALLY ADJUSTED (% change from preceding month) |                |       |                     |       |                         |       |
| <b>2000</b>   |                |       |                     |       |                         |       |
| January   | -4.3           | -4.0  | n.a.                | n.a.  | 17.3                    | 16.8  |
| February  | 5.2            | 5.0   | n.a.                | n.a.  | -17.6                   | -16.9 |
| March   | -8.0           | -8.4  | n.a.                | n.a.  | 4.3                     | 2.9   |
| April   | -10.8          | -10.2 | n.a.                | n.a.  | -14.2                   | -13.3 |
| May   | -22.6          | -22.2 | n.a.                | n.a.  | -15.2                   | -15.2 |
| June  | 7.1            | 6.9   | n.a.                | n.a.  | 0.9                     | 1.3   |
| July  | -20.6          | -21.0 | n.a.                | n.a.  | 4.7                     | 4.1   |
| August  | -16.6          | -16.3 | n.a.                | n.a.  | -35.6                   | -34.6 |
| September   | 5.9            | 6.2   | n.a.                | n.a.  | 10.1                    | 8.2   |
| October   | -7.6           | -7.2  | n.a.                | n.a.  | -11.2                   | -9.8  |
| November  | 44.8           | 42.1  | n.a.                | n.a.  | 30.5                    | 27.8  |
| December  | -14.9          | -14.5 | n.a.                | n.a.  | 21.4                    | 21.2  |
| <b>2001</b>   |                |       |                     |       |                         |       |
| January   | 7.6            | 10.0  | n.a.                | n.a.  | -10.7                   | -8.4  |
| February  | 16.4           | 14.5  | n.a.                | n.a.  | -0.7                    | -2.5  |
| March   | -15.8          | -15.6 | n.a.                | n.a.  | 0.6                     | 0.6   |
| TREND ESTIMATES (% change from preceding month)     |                |       |                     |       |                         |       |
| <b>2000</b>   |                |       |                     |       |                         |       |
| January   | 0.9            | 0.8   | 0.4                 | 0.2   | 0.8                     | 0.6   |
| February  | -2.2           | -2.3  | -0.8                | -1.0  | -1.8                    | -1.9  |
| March   | -5.7           | -5.7  | -2.2                | -2.3  | -4.8                    | -4.8  |
| April   | -9.0           | -9.0  | -2.9                | -2.9  | -7.4                    | -7.3  |
| May   | -12.0          | -11.9 | -2.8                | -2.7  | -9.4                    | -9.3  |
| June  | -13.2          | -13.1 | -5.7                | -5.4  | -10.9                   | -10.7 |
| July  | -12.0          | -11.9 | -7.0                | -6.7  | -10.4                   | -10.2 |
| August  | -8.4           | -8.4  | -6.3                | -6.2  | -7.7                    | -7.7  |
| September   | -2.4           | -2.4  | -5.8                | -5.8  | -3.5                    | -3.5  |
| October   | 3.3            | 3.2   | -0.5                | -0.7  | 2.1                     | 1.9   |
| November  | 6.1            | 6.2   | 3.7                 | 3.2   | 5.3                     | 5.2   |
| December  | 6.3            | 6.4   | 6.2                 | 5.7   | 6.3                     | 6.2   |
| <b>2001</b>   |                |       |                     |       |                         |       |
| January   | 4.7            | 4.8   | 5.4                 | 5.1   | 4.9                     | 4.9   |
| February  | 3.3            | 3.3   | 4.0                 | 3.7   | 3.5                     | 3.4   |
| March   | 1.8            | 1.9   | 0.7                 | 0.6   | 1.5                     | 1.5   |

## VALUE OF BUILDING APPROVED

| Month               | New residential building<br>\$m | Alterations and additions to residential buildings(a)<br>\$m | Total residential building<br>\$m | Non-residential building<br>\$m | Total building<br>\$m |
|---------------------|---------------------------------|--|-----------------------------------|---------------------------------|-----------------------|
| ORIGINAL            |                                 |  |                                   |                                 |                       |
| <b>2000</b>         |                                 |  |                                   |                                 |                       |
| January             | 633.0                           | 80.3   | 713.3                             | 235.1                           | 948.3                 |
| February            | 598.7                           | 101.2  | 699.9                             | 325.5                           | 1 025.5               |
| March               | 654.2                           | 103.3  | 757.5                             | 215.8                           | 973.4                 |
| April               | 436.0                           | 112.8  | 548.8                             | 327.3                           | 876.1                 |
| May                 | 460.1                           | 103.5  | 563.6                             | 240.2                           | 803.8                 |
| June                | 429.7                           | 109.4  | 539.1                             | 350.7                           | 889.8                 |
| July                | 465.2                           | 125.7  | 590.9                             | 560.1                           | 1 151.0               |
| August              | 370.0                           | 104.9  | 474.9                             | 267.7                           | 742.7                 |
| September           | 344.6                           | 73.0   | 417.5                             | 292.9                           | 710.5                 |
| October             | 291.3                           | 108.0  | 399.3                             | 225.3                           | 624.6                 |
| November            | 438.5                           | 97.8   | 536.3                             | 290.4                           | 826.7                 |
| December            | 470.0                           | 87.4   | 557.4                             | 311.0                           | 868.4                 |
| <b>2001</b>         |                                 |  |                                   |                                 |                       |
| January             | 387.3                           | 73.2   | 460.5                             | 266.8                           | 727.3                 |
| February            | 455.3                           | 89.4   | 544.7                             | 257.8                           | 802.6                 |
| March               | 528.5                           | 126.1  | 654.6                             | 501.5                           | 1 156.2               |
| SEASONALLY ADJUSTED |                                 |  |                                   |                                 |                       |
| <b>2000</b>         |                                 |  |                                   |                                 |                       |
| January             | 759.8                           | 99.0   | 858.8                             | n.a.                            | 1 106.9               |
| February            | 569.6                           | 97.4   | 667.0                             | n.a.                            | 916.1                 |
| March               | 591.1                           | 90.4   | 681.5                             | n.a.                            | 934.1                 |
| April               | 477.3                           | 121.3  | 598.6                             | n.a.                            | 1 057.0               |
| May                 | 421.9                           | 97.1   | 519.0                             | n.a.                            | 712.4                 |
| June                | 421.9                           | 113.2  | 535.1                             | n.a.                            | 946.6                 |
| July                | 489.8                           | 138.7  | 628.5                             | n.a.                            | 1 266.6               |
| August              | 325.1                           | 95.3   | 420.4                             | n.a.                            | 623.3                 |
| September           | 341.6                           | 72.6   | 414.3                             | n.a.                            | 701.8                 |
| October             | 297.6                           | 92.9   | 390.4                             | n.a.                            | 635.7                 |
| November            | 423.6                           | 94.4   | 518.0                             | n.a.                            | 766.9                 |
| December            | 534.6                           | 108.6  | 643.2                             | n.a.                            | 973.8                 |
| <b>2001</b>         |                                 |  |                                   |                                 |                       |
| January             | 454.7                           | 84.5   | 539.1                             | n.a.                            | 818.7                 |
| February            | 448.3                           | 89.7   | 538.0                             | n.a.                            | 719.9                 |
| March               | 472.8                           | 113.6  | 586.4                             | n.a.                            | 1 144.4               |
| TREND ESTIMATES     |                                 |  |                                   |                                 |                       |
| <b>2000</b>         |                                 |  |                                   |                                 |                       |
| January             | 618.5                           | 98.3   | 716.8                             | 245.7                           | 962.5                 |
| February            | 603.4                           | 99.6   | 703.0                             | 266.0                           | 969.0                 |
| March               | 567.8                           | 103.1  | 670.9                             | 298.3                           | 969.2                 |
| April               | 519.4                           | 107.5  | 626.9                             | 337.8                           | 964.7                 |
| May                 | 468.4                           | 110.8  | 579.1                             | 370.9                           | 950.0                 |
| June                | 421.1                           | 110.9  | 532.0                             | 384.6                           | 916.6                 |
| July                | 386.7                           | 107.7  | 494.4                             | 375.5                           | 869.9                 |
| August              | 368.8                           | 102.6  | 471.4                             | 349.7                           | 821.1                 |
| September           | 366.3                           | 96.8   | 463.2                             | 310.9                           | 774.0                 |
| October             | 381.2                           | 92.8   | 474.0                             | 276.8                           | 750.8                 |
| November            | 406.3                           | 91.7   | 498.0                             | 261.3                           | 759.3                 |
| December            | 435.4                           | 93.2   | 528.7                             | 271.7                           | 800.3                 |
| <b>2001</b>         |                                 |  |                                   |                                 |                       |
| January             | 460.3                           | 96.0   | 556.3                             | 300.1                           | 856.4                 |
| February            | 478.9                           | 99.1   | 578.1                             | 338.1                           | 916.2                 |
| March               | 488.8                           | 102.2  | 590.9                             | 369.4                           | 960.3                 |

(a) Refer to Explanatory Notes paragraph 18.



## VALUE OF BUILDING APPROVED, Percentage Change

| Month   | New residential building | Alterations and additions to residential buildings(a) | Total residential building | Non-residential building | Total building |
|---|--------------------------|---|----------------------------|--------------------------|----------------|
| ORIGINAL (% change from preceding month)            |                          |   |                            |                          |                |
| <b>2000</b>   |                          |   |                            |                          |                |
| January   | 12.7                     | -8.9  | 9.8                        | -11.7                    | 3.5            |
| February  | -5.4                     | 26.0  | -1.9                       | 38.5                     | 8.1            |
| March   | 9.3                      | 2.1   | 8.2                        | -33.7                    | -5.1           |
| April   | -33.4                    | 9.2   | -27.6                      | 51.7                     | -10.0          |
| May   | 5.5                      | -8.2  | 2.7                        | -26.6                    | -8.3           |
| June  | -6.6                     | 5.7   | -4.3                       | 46.0                     | 10.7           |
| July  | 8.3                      | 14.9  | 9.6                        | 59.7                     | 29.4           |
| August  | -20.5                    | -16.5   | -19.6                      | -52.2                    | -35.5          |
| September   | -6.9                     | -30.4   | -12.1                      | 9.4                      | -4.3           |
| October   | -15.5                    | 47.9  | -4.4                       | -23.1                    | -12.1          |
| November  | 50.5                     | -9.4  | 34.3                       | 28.9                     | 32.4           |
| December  | 7.2                      | -10.6   | 3.9                        | 7.1                      | 5.0            |
| <b>2001</b>   |                          |   |                            |                          |                |
| January   | -17.6                    | -16.2   | -17.4                      | -14.2                    | -16.2          |
| February  | 17.6                     | 22.1  | 18.3                       | -3.4                     | 10.4           |
| March   | 16.1                     | 41.1  | 20.2                       | 94.5                     | 44.1           |
| SEASONALLY ADJUSTED (% change from preceding month) |                          |   |                            |                          |                |
| <b>2000</b>   |                          |   |                            |                          |                |
| January   | 26.6                     | -1.5  | 22.6                       | n.a.                     | 15.7           |
| February  | -25.0                    | -1.6  | -22.3                      | n.a.                     | -17.2          |
| March   | 3.8                      | -7.2  | 2.2                        | n.a.                     | 2.0            |
| April   | -19.3                    | 34.2  | -12.2                      | n.a.                     | 13.2           |
| May   | -11.6                    | -20.0   | -13.3                      | n.a.                     | -32.6          |
| June  | 0.0                      | 16.6  | 3.1                        | n.a.                     | 32.9           |
| July  | 16.1                     | 22.5  | 17.5                       | n.a.                     | 33.8           |
| August  | -33.6                    | -31.3   | -33.1                      | n.a.                     | -50.8          |
| September   | 5.1                      | -23.8   | -1.5                       | n.a.                     | 12.6           |
| October   | -12.9                    | 28.0  | -5.8                       | n.a.                     | -9.4           |
| November  | 42.3                     | 1.6   | 32.7                       | n.a.                     | 20.6           |
| December  | 26.2                     | 15.0  | 24.2                       | n.a.                     | 27.0           |
| <b>2001</b>   |                          |   |                            |                          |                |
| January   | -14.9                    | -22.2   | -16.2                      | n.a.                     | -15.9          |
| February  | -1.4                     | 6.2   | -0.2                       | n.a.                     | -12.1          |
| March   | 5.5                      | 26.6  | 9.0                        | n.a.                     | 59.0           |
| TREND ESTIMATES (% change from preceding month)     |                          |   |                            |                          |                |
| <b>2000</b>   |                          |   |                            |                          |                |
| January   | 1.1                      | 0.5   | 1.0                        | 3.5                      | 1.6            |
| February  | -2.4                     | 1.3   | -1.9                       | 8.3                      | 0.7            |
| March   | -5.9                     | 3.5   | -4.6                       | 12.1                     | 0.0            |
| April   | -8.5                     | 4.3   | -6.6                       | 13.2                     | -0.5           |
| May   | -9.8                     | 3.1   | -7.6                       | 9.8                      | -1.5           |
| June  | -10.1                    | 0.1   | -8.1                       | 3.7                      | -3.5           |
| July  | -8.2                     | -2.9  | -7.1                       | -2.4                     | -5.1           |
| August  | -4.6                     | -4.7  | -4.7                       | -6.9                     | -5.6           |
| September   | -0.7                     | -5.7  | -1.7                       | -11.1                    | -5.7           |
| October   | 4.1                      | -4.1  | 2.3                        | -11.0                    | -3.0           |
| November  | 6.6                      | -1.2  | 5.1                        | -5.6                     | 1.1            |
| December  | 7.2                      | 1.6   | 6.2                        | 4.0                      | 5.4            |
| <b>2001</b>   |                          |   |                            |                          |                |
| January   | 5.7                      | 3.0   | 5.2                        | 10.5                     | 7.0            |
| February  | 4.0                      | 3.2   | 3.9                        | 12.7                     | 7.0            |
| March   | 2.1                      | 3.1   | 2.2                        | 9.3                      | 4.8            |

(a) Refer to Explanatory Notes paragraph 18.

## DWELLING UNITS APPROVED, Private and Public Sector: Original

| Period                  | New houses | New other residential building | Alterations and additions to residential buildings | Conversion(a) | Non-residential building(a) | Total dwelling units |
|-------------------------|------------|--------------------------------|--|---------------|-----------------------------|----------------------|
| PRIVATE SECTOR (Number) |            |                                |  |               |                             |                      |
| <b>1997-1998</b>        | 27 367     | 6 811                          | 262  | 699           | 99                          | 35 238               |
| <b>1998-1999</b>        | 28 683     | 8 511                          | 264  | 1 090         | 257                         | 38 805               |
| <b>1999-2000</b>        | 35 667     | 11 729                         | 416  | 891           | 262                         | 48 965               |
| <b>2000</b>             |            |                                |  |               |                             |                      |
| March                   | 3 550      | 1 241                          | 22   | 24            | 25                          | 4 862                |
| April                   | 2 547      | 787                            | 183  | 70            | 18                          | 3 605                |
| May                     | 2 521      | 813                            | 18   | 51            | 6                           | 3 409                |
| June                    | 2 378      | 748                            | 15   | 48            | 18                          | 3 207                |
| July                    | 1 837      | 1 014                          | 8  | 459           | 9                           | 3 327                |
| August                  | 1 803      | 709                            | 20   | 151           | 4                           | 2 687                |
| September               | 1 841      | 647                            | 19   | 8             | 4                           | 2 519                |
| October                 | 1 513      | 450                            | 47   | 14            | 4                           | 2 028                |
| November                | 2 359      | 578                            | 90   | 41            | 4                           | 3 072                |
| December                | 1 694      | 1 245                          | 114  | 25            | 3                           | 3 081                |
| <b>2001</b>             |            |                                |  |               |                             |                      |
| January                 | 1 644      | 870                            | 26   | 3             | 4                           | 2 547                |
| February                | 2 276      | 882                            | 17   | 5             | 4                           | 3 184                |
| March                   | 2 178      | 1 059                          | 30   | 96            | 8                           | 3 371                |
| PUBLIC SECTOR (Number)  |            |                                |  |               |                             |                      |
| <b>1997-1998</b>        | 570        | 601                            | 25   | 1             | 3                           | 1 200                |
| <b>1998-1999</b>        | 544        | 350                            | 3  | 2             | 0                           | 899                  |
| <b>1999-2000</b>        | 507        | 280                            | 14   | 5             | 3                           | 809                  |
| <b>2000</b>             |            |                                |  |               |                             |                      |
| March                   | 12         | 0                              | 0  | 0             | 0                           | 12                   |
| April                   | 27         | 12                             | 11   | 0             | 0                           | 50                   |
| May                     | 44         | 5                              | 0  | 0             | 1                           | 50                   |
| June                    | 30         | 19                             | 0  | 0             | 1                           | 50                   |
| July                    | 17         | 21                             | 0  | 0             | 0                           | 38                   |
| August                  | 17         | 42                             | 0  | 0             | 0                           | 59                   |
| September               | 32         | 0                              | 0  | 0             | 0                           | 32                   |
| October                 | 45         | 26                             | 0  | 0             | 0                           | 71                   |
| November                | 2          | 13                             | 0  | 0             | 0                           | 15                   |
| December                | 16         | 0                              | 0  | 0             | 0                           | 16                   |
| <b>2001</b>             |            |                                |  |               |                             |                      |
| January                 | 31         | 27                             | 0  | 0             | 2                           | 60                   |
| February                | 26         | 2                              | 0  | 0             | 0                           | 28                   |
| March                   | 21         | 2                              | 0  | 0             | 0                           | 23                   |
| TOTAL (Number)          |            |                                |  |               |                             |                      |
| <b>1997-1998</b>        | 27 937     | 7 412                          | 287  | 700           | 102                         | 36 438               |
| <b>1998-1999</b>        | 29 227     | 8 861                          | 267  | 1 092         | 257                         | 39 704               |
| <b>1999-2000</b>        | 36 174     | 12 009                         | 430  | 896           | 265                         | 49 774               |
| <b>2000</b>             |            |                                |  |               |                             |                      |
| March                   | 3 562      | 1 241                          | 22   | 24            | 25                          | 4 874                |
| April                   | 2 574      | 799                            | 194  | 70            | 18                          | 3 655                |
| May                     | 2 565      | 818                            | 18   | 51            | 7                           | 3 459                |
| June                    | 2 408      | 767                            | 15   | 48            | 19                          | 3 257                |
| July                    | 1 854      | 1 035                          | 8  | 459           | 9                           | 3 365                |
| August                  | 1 820      | 751                            | 20   | 151           | 4                           | 2 746                |
| September               | 1 873      | 647                            | 19   | 8             | 4                           | 2 551                |
| October                 | 1 558      | 476                            | 47   | 14            | 4                           | 2 099                |
| November                | 2 361      | 591                            | 90   | 41            | 4                           | 3 087                |
| December                | 1 710      | 1 245                          | 114  | 25            | 3                           | 3 097                |
| <b>2001</b>             |            |                                |  |               |                             |                      |
| January                 | 1 675      | 897                            | 26   | 3             | 6                           | 2 607                |
| February                | 2 302      | 884                            | 17   | 5             | 4                           | 3 212                |
| March                   | 2 199      | 1 061                          | 30   | 96            | 8                           | 3 394                |

(a) See Glossary for definition.

## VALUE OF BUILDING APPROVED, Private and Public Sector: Original

| Period                      | New houses | New other residential building | Alterations and additions creating dwellings | Alterations and additions not creating dwellings | Conversion(a) | Total residential building | Non-residential building(a) | Total building |
|-----------------------------|------------|--------------------------------|--|--|---------------|----------------------------|-----------------------------|----------------|
| PRIVATE SECTOR (\$ million) |            |                                |  |  |               |                            |                             |                |
| <b>1997-1998</b>            | 3 084.3    | 727.0                          | 22.0   | 708.6  | 63.2          | 4 605.0                    | 2 476.9                     | 7 081.9        |
| <b>1998-1999</b>            | 3 460.8    | 1 021.8                        | 31.4   | 775.1  | 108.9         | 5 398.1                    | 2 262.5                     | 7 660.6        |
| <b>1999-2000</b>            | 4 741.2    | 1 571.4                        | 54.3   | 1 004.3  | 106.0         | 7 477.2                    | 2 622.1                     | 10 099.3       |
| <b>2000</b>                 |            |                                |  |  |               |                            |                             |                |
| March                       | 484.1      | 169.0                          | 1.7  | 96.4   | 2.2           | 753.4                      | 185.8                       | 939.2          |
| April                       | 343.8      | 89.2                           | 30.5   | 74.3   | 6.2           | 543.9                      | 257.2                       | 801.1          |
| May                         | 347.9      | 107.9                          | 1.7  | 91.9   | 5.9           | 555.3                      | 213.2                       | 768.5          |
| June                        | 326.6      | 99.3                           | 2.4  | 94.9   | 7.6           | 530.7                      | 324.2                       | 854.9          |
| July                        | 261.7      | 200.4                          | 0.8  | 60.3   | 62.7          | 585.8                      | 310.3                       | 896.1          |
| August                      | 266.3      | 98.4                           | 1.2  | 71.2   | 21.6          | 458.9                      | 219.0                       | 677.9          |
| September                   | 259.0      | 82.3                           | 1.4  | 68.4   | 2.0           | 413.1                      | 226.9                       | 640.0          |
| October                     | 219.2      | 64.8                           | 5.4  | 89.1   | 1.8           | 380.2                      | 185.1                       | 565.3          |
| November                    | 348.1      | 89.3                           | 6.2  | 87.7   | 3.1           | 534.6                      | 226.5                       | 761.0          |
| December                    | 248.8      | 218.7                          | 10.8   | 64.0   | 3.5           | 545.8                      | 279.4                       | 825.2          |
| <b>2001</b>                 |            |                                |  |  |               |                            |                             |                |
| January                     | 240.9      | 140.5                          | 1.7  | 62.4   | 0.2           | 445.7                      | 181.5                       | 627.3          |
| February                    | 328.1      | 123.1                          | 1.8  | 71.1   | 1.7           | 525.9                      | 202.7                       | 728.6          |
| March                       | 320.6      | 204.3                          | 2.3  | 93.3   | 21.4          | 641.9                      | 323.0                       | 964.9          |
| PUBLIC SECTOR (\$ million)  |            |                                |  |  |               |                            |                             |                |
| <b>1997-1998</b>            | 48.6       | 40.0                           | 0.8  | 63.8   | 0.1           | 153.3                      | 587.7                       | 740.9          |
| <b>1998-1999</b>            | 44.8       | 22.4                           | 0.3  | 35.4   | 0.1           | 103.0                      | 863.2                       | 966.2          |
| <b>1999-2000</b>            | 45.5       | 19.6                           | 0.5  | 42.4   | 0.9           | 108.9                      | 592.9                       | 701.9          |
| <b>2000</b>                 |            |                                |  |  |               |                            |                             |                |
| March                       | 1.1        | 0.0                            | 0.0  | 3.0  | 0.0           | 4.1                        | 30.0                        | 34.1           |
| April                       | 2.1        | 0.8                            | 0.4  | 1.5  | 0.0           | 4.9                        | 70.2                        | 75.1           |
| May                         | 3.9        | 0.4                            | 0.0  | 4.0  | 0.0           | 8.3                        | 27.0                        | 35.2           |
| June                        | 2.6        | 1.2                            | 0.0  | 4.6  | 0.0           | 8.4                        | 26.5                        | 34.9           |
| July                        | 1.6        | 1.5                            | 0.0  | 1.9  | 0.0           | 5.1                        | 249.9                       | 254.9          |
| August                      | 2.1        | 3.2                            | 0.0  | 10.8   | 0.0           | 16.1                       | 48.7                        | 64.7           |
| September                   | 3.3        | 0.0                            | 0.0  | 1.2  | 0.0           | 4.4                        | 66.1                        | 70.5           |
| October                     | 5.5        | 1.8                            | 0.0  | 11.9   | 0.0           | 19.2                       | 40.1                        | 59.3           |
| November                    | 0.2        | 0.9                            | 0.0  | 0.7  | 0.0           | 1.8                        | 63.9                        | 65.6           |
| December                    | 2.5        | 0.0                            | 0.0  | 9.1  | 0.0           | 11.6                       | 31.6                        | 43.2           |
| <b>2001</b>                 |            |                                |  |  |               |                            |                             |                |
| January                     | 3.7        | 2.2                            | 0.0  | 8.9  | 0.0           | 14.7                       | 85.3                        | 100.0          |
| February                    | 3.9        | 0.1                            | 0.0  | 14.8   | 0.0           | 18.8                       | 55.1                        | 73.9           |
| March                       | 3.5        | 0.2                            | 0.0  | 9.1  | 0.0           | 12.8                       | 178.5                       | 191.3          |
| TOTAL (\$ million)          |            |                                |  |  |               |                            |                             |                |
| <b>1997-1998</b>            | 3 132.9    | 766.9                          | 22.8   | 772.4  | 63.2          | 4 758.3                    | 3 064.5                     | 7 822.8        |
| <b>1998-1999</b>            | 3 505.7    | 1 044.2                        | 31.8   | 810.4  | 109.0         | 5 501.1                    | 3 125.7                     | 8 626.8        |
| <b>1999-2000</b>            | 4 786.7    | 1 591.0                        | 54.8   | 1 046.7  | 106.9         | 7 586.1                    | 3 215.0                     | 10 801.1       |
| <b>2000</b>                 |            |                                |  |  |               |                            |                             |                |
| March                       | 485.2      | 169.0                          | 1.7  | 99.4   | 2.2           | 757.5                      | 215.8                       | 973.4          |
| April                       | 346.0      | 90.0                           | 30.9   | 75.8   | 6.2           | 548.8                      | 327.3                       | 876.1          |
| May                         | 351.8      | 108.3                          | 1.7  | 96.0   | 5.9           | 563.6                      | 240.2                       | 803.8          |
| June                        | 329.2      | 100.5                          | 2.4  | 99.5   | 7.6           | 539.1                      | 350.7                       | 889.8          |
| July                        | 263.3      | 201.9                          | 0.8  | 62.2   | 62.7          | 590.9                      | 560.1                       | 1 151.0        |
| August                      | 268.4      | 101.6                          | 1.2  | 82.1   | 21.6          | 474.9                      | 267.7                       | 742.7          |
| September                   | 262.2      | 82.3                           | 1.4  | 69.6   | 2.0           | 417.5                      | 292.9                       | 710.5          |
| October                     | 224.7      | 66.6                           | 5.4  | 100.9  | 1.8           | 399.3                      | 225.3                       | 624.6          |
| November                    | 348.3      | 90.2                           | 6.2  | 88.5   | 3.1           | 536.3                      | 290.4                       | 826.7          |
| December                    | 251.3      | 218.7                          | 10.8   | 73.1   | 3.5           | 557.4                      | 311.0                       | 868.4          |
| <b>2001</b>                 |            |                                |  |  |               |                            |                             |                |
| January                     | 244.6      | 142.7                          | 1.7  | 71.2   | 0.2           | 460.5                      | 266.8                       | 727.3          |
| February                    | 332.0      | 123.3                          | 1.8  | 85.9   | 1.7           | 544.7                      | 257.8                       | 802.6          |
| March                       | 324.0      | 204.5                          | 2.3  | 102.4  | 21.4          | 654.6                      | 501.5                       | 1 156.2        |

(a) See Glossary for definition.

## DWELLING UNITS APPROVED IN NEW RESIDENTIAL BUILDINGS(a): Original

### NEW OTHER RESIDENTIAL BUILDING.....

| Period                   | <i>New houses</i> | <i>Semi-detached, row or terrace houses, townhouses, etc. of.....</i> |                            | <i>Flats units or apartments in a building of.....</i> |                           |                      | <i>Total</i>                | <i>Total new residential building</i> |        |        |
|--------------------------|-------------------|---|----------------------------|--|---------------------------|----------------------|-----------------------------|---------------------------------------|--------|--------|
|                          |                   | <i>One storey</i>   | <i>Two or more storeys</i> | <i>Total</i>   | <i>One or two storeys</i> | <i>Three storeys</i> | <i>Four or more storeys</i> | <i>Total</i>                          |        |        |
| NUMBER OF DWELLING UNITS |                   |   |                            |  |                           |                      |                             |                                       |        |        |
| <b>1997-1998</b>         | 27 937            | 2 881   | 2 153                      | 5 034  | 425                       | 481                  | 1 472                       | 2 378                                 | 7 412  | 35 349 |
| <b>1998-1999</b>         | 29 227            | 2 484   | 2 415                      | 4 899  | 679                       | 454                  | 2 829                       | 3 962                                 | 8 861  | 38 088 |
| <b>1999-2000</b>         | 36 174            | 2 668   | 3 288                      | 5 956  | 760                       | 453                  | 4 840                       | 6 053                                 | 12 009 | 48 183 |
| <b>2000</b>              |                   |   |                            |  |                           |                      |                             |                                       |        |        |
| January                  | 2 539             | 123   | 360                        | 483  | 53                        | 46                   | 952                         | 1 051                                 | 1 534  | 4 073  |
| February                 | 3 562             | 373   | 403                        | 776  | 65                        | 32                   | 235                         | 332                                   | 1 108  | 4 670  |
| March                    | 3 562             | 325   | 300                        | 625  | 93                        | 24                   | 499                         | 616                                   | 1 241  | 4 803  |
| April                    | 2 574             | 225   | 320                        | 545  | 62                        | 18                   | 174                         | 254                                   | 799    | 3 373  |
| May                      | 2 565             | 195   | 184                        | 379  | 66                        | 69                   | 304                         | 439                                   | 818    | 3 383  |
| June                     | 2 408             | 170   | 203                        | 373  | 121                       | 51                   | 222                         | 394                                   | 767    | 3 175  |
| July                     | 1 854             | 130   | 211                        | 341  | 36                        | 115                  | 543                         | 694                                   | 1 035  | 2 889  |
| August                   | 1 820             | 251   | 142                        | 393  | 58                        | 87                   | 213                         | 358                                   | 751    | 2 571  |
| September                | 1 873             | 136   | 130                        | 266  | 2                         | 35                   | 344                         | 381                                   | 647    | 2 520  |
| October                  | 1 558             | 150   | 145                        | 295  | 10                        | 0                    | 171                         | 181                                   | 476    | 2 034  |
| November                 | 2 361             | 157   | 149                        | 306  | 17                        | 67                   | 201                         | 285                                   | 591    | 2 952  |
| December                 | 1 710             | 171   | 173                        | 344  | 34                        | 137                  | 730                         | 901                                   | 1 245  | 2 955  |
| <b>2001</b>              |                   |   |                            |  |                           |                      |                             |                                       |        |        |
| January                  | 1 675             | 159   | 141                        | 300  | 33                        | 12                   | 552                         | 597                                   | 897    | 2 572  |
| February                 | 2 302             | 169   | 242                        | 411  | 9                         | 52                   | 412                         | 473                                   | 884    | 3 186  |
| March                    | 2 199             | 194   | 231                        | 425  | 44                        | 23                   | 569                         | 636                                   | 1 061  | 3 260  |

### VALUE (\$ million)

|                  |         |       |       |       |      |      |       |       |         |         |
|------------------|---------|-------|-------|-------|------|------|-------|-------|---------|---------|
| <b>1997-1998</b> | 3 132.8 | 211.9 | 211.4 | 423.2 | 36.0 | 53.4 | 254.3 | 343.5 | 766.9   | 3 899.8 |
| <b>1998-1999</b> | 3 505.8 | 194.3 | 261.4 | 455.2 | 60.2 | 64.3 | 464.2 | 588.8 | 1 044.2 | 4 549.9 |
| <b>1999-2000</b> | 4 786.8 | 230.3 | 367.3 | 597.4 | 78.0 | 65.0 | 850.3 | 993.4 | 1 590.9 | 6 377.7 |
| <b>2000</b>      |         |       |       |       |      |      |       |       |         |         |
| January          | 343.7   | 10.4  | 39.8  | 50.1  | 4.7  | 8.7  | 225.7 | 239.2 | 289.3   | 633.0   |
| February         | 477.1   | 34.0  | 45.1  | 79.1  | 7.2  | 5.3  | 30.0  | 42.5  | 121.6   | 598.7   |
| March            | 485.2   | 27.5  | 37.5  | 65.0  | 12.8 | 3.7  | 87.5  | 104.0 | 169.0   | 654.2   |
| April            | 346.0   | 19.4  | 33.3  | 52.7  | 9.3  | 3.1  | 24.9  | 37.3  | 90.0    | 436.0   |
| May              | 351.8   | 20.6  | 21.6  | 42.2  | 4.5  | 8.0  | 53.4  | 66.0  | 108.3   | 460.1   |
| June             | 329.2   | 15.0  | 21.5  | 36.5  | 11.0 | 6.7  | 46.3  | 63.9  | 100.5   | 429.7   |
| July             | 263.3   | 10.9  | 27.3  | 38.2  | 3.9  | 25.8 | 134.0 | 163.7 | 201.9   | 465.2   |
| August           | 268.4   | 22.1  | 19.2  | 41.3  | 6.9  | 16.8 | 36.6  | 60.3  | 101.6   | 370.0   |
| September        | 262.2   | 12.5  | 18.6  | 31.1  | 0.3  | 3.7  | 47.2  | 51.2  | 82.3    | 344.6   |
| October          | 224.7   | 12.7  | 18.5  | 31.2  | 1.6  | 0.0  | 33.8  | 35.4  | 66.6    | 291.3   |
| November         | 348.3   | 13.1  | 18.4  | 31.5  | 2.7  | 8.4  | 47.6  | 58.7  | 90.2    | 438.5   |
| December         | 251.3   | 13.6  | 22.1  | 35.7  | 2.4  | 17.3 | 163.3 | 183.0 | 218.7   | 470.0   |
| <b>2001</b>      |         |       |       |       |      |      |       |       |         |         |
| January          | 244.6   | 14.6  | 21.3  | 35.9  | 2.1  | 3.4  | 101.3 | 106.8 | 142.7   | 387.3   |
| February         | 332.0   | 15.3  | 27.9  | 43.2  | 1.9  | 11.8 | 66.3  | 80.1  | 123.3   | 455.3   |
| March            | 324.0   | 17.0  | 27.3  | 44.4  | 4.0  | 7.6  | 148.5 | 160.1 | 204.5   | 528.5   |

(a) See Glossary for definition.

VALUE OF BUILDING APPROVED, Chain Volume Measures(a)

| <i>Period</i>                              | <i>New houses</i> | <i>New other residential building</i> | <i>New residential building</i> | <i>Alterations and additions to residential buildings(b)</i> | <i>Total residential building</i> | <i>Non-residential building</i> | <i>Total building</i> |
|--|-------------------|---------------------------------------|---------------------------------|--|-----------------------------------|---------------------------------|-----------------------|
| ORIGINAL (\$ million)                      |                   |                                       |                                 |  |                                   |                                 |                       |
| <b>1997-1998</b>                           | 3 212.4           | 798.2                                 | 4 012.5                         | 879.7  | 4 892.4                           | 3 163.2                         | <b>8 054.6</b>        |
| <b>1998-1999</b>                           | 3 505.7           | 1 044.2                               | 4 549.9                         | 951.1  | 5 501.1                           | 3 125.7                         | <b>8 626.8</b>        |
| <b>1999-2000</b>                           | 4 452.2           | 1 480.0                               | 5 932.1                         | 1 122.1  | 7 054.2                           | 3 083.1                         | <b>10 137.3</b>       |
| <b>1999</b>                                |                   |                                       |                                 |  |                                   |                                 |                       |
| September                                  | 1 128.7           | 391.2                                 | 1 519.9                         | 292.3  | 1 812.2                           | 760.6                           | <b>2 572.8</b>        |
| December                                   | 1 213.5           | 295.3                                 | 1 508.8                         | 278.6  | 1 787.4                           | 718.8                           | <b>2 506.2</b>        |
| <b>2000</b>                                |                   |                                       |                                 |  |                                   |                                 |                       |
| March                                      | 1 193.0           | 531.9                                 | 1 724.8                         | 260.3  | 1 985.1                           | 740.6                           | <b>2 725.7</b>        |
| June                                       | 917.0             | 261.6                                 | 1 178.6                         | 290.9  | 1 469.5                           | 863.1                           | <b>2 332.6</b>        |
| September                                  | 651.8             | 324.0                                 | 975.8                           | 249.1  | 1 224.9                           | 1 039.1                         | <b>2 263.9</b>        |
| December                                   | 673.5             | 311.2                                 | 984.6                           | 239.4  | 1 224.0                           | 757.6                           | <b>1 981.7</b>        |
| ORIGINAL (% change from preceding quarter) |                   |                                       |                                 |  |                                   |                                 |                       |
| <b>1999</b>                                |                   |                                       |                                 |  |                                   |                                 |                       |
| September                                  | 19.5              | 56.2                                  | 27.1                            | 22.8   | 26.4                              | 26.8                            | <b>26.5</b>           |
| December                                   | 7.5               | -24.5                                 | -0.7                            | -4.7   | -1.4                              | -5.5                            | <b>-2.6</b>           |
| <b>2000</b>                                |                   |                                       |                                 |  |                                   |                                 |                       |
| March                                      | -1.7              | 80.1                                  | 14.3                            | -6.6   | 11.1                              | 3.0                             | <b>8.8</b>            |
| June                                       | -23.1             | -50.8                                 | -31.7                           | 11.8   | -26.0                             | 16.5                            | <b>-14.4</b>          |
| September                                  | -28.9             | 23.9                                  | -17.2                           | -14.4  | -16.6                             | 20.4                            | <b>-2.9</b>           |
| December                                   | 3.3               | -4.0                                  | 0.9                             | -3.9   | -0.1                              | -27.1                           | <b>-12.5</b>          |

(a) Reference year for chain volume measures is 1998-99.  
Refer to Explanatory Notes paragraph 26-27.

(b) Refer to Explanatory Notes paragraph 18.

NON-RESIDENTIAL BUILDING APPROVED, Jobs By Value Range: **Original**

| Period                        | <i>Hotels, motels and other short term accommodation</i> |       | Shops..... |       | Factories..... |       | Offices..... |       | <i>Other business premises.....</i> |       | <i>Educational.....</i> |       |
|-------------------------------|--|-------|------------|-------|----------------|-------|--------------|-------|-------------------------------------|-------|-------------------------|-------|
|                               | no.  | \$m   | no.        | \$m   | no.            | \$m   | no.          | \$m   | no.                                 | \$m   | no.                     | \$m   |
| Value—\$50,000–\$199,999      |  |       |            |       |                |       |              |       |                                     |       |                         |       |
| <b>2001</b>                   |  |       |            |       |                |       |              |       |                                     |       |                         |       |
| January                       | 5  | 0.5   | 55         | 5.4   | 24             | 2.1   | 46           | 4.8   | 24                                  | 2.6   | 22                      | 2.3   |
| February                      | 5  | 0.5   | 94         | 8.5   | 15             | 1.6   | 54           | 5.2   | 27                                  | 2.8   | 31                      | 3.3   |
| March                         | 3  | 0.2   | 116        | 10.9  | 22             | 2.3   | 55           | 5.0   | 32                                  | 2.9   | 26                      | 2.5   |
| Value—\$200,000–\$499,999     |  |       |            |       |                |       |              |       |                                     |       |                         |       |
| <b>2001</b>                   |  |       |            |       |                |       |              |       |                                     |       |                         |       |
| January                       | 0  | 0.0   | 14         | 3.8   | 15             | 4.6   | 15           | 4.0   | 19                                  | 5.7   | 15                      | 4.8   |
| February                      | 1  | 0.4   | 24         | 6.3   | 14             | 4.1   | 23           | 6.9   | 8                                   | 2.5   | 8                       | 2.7   |
| March                         | 3  | 0.8   | 15         | 4.2   | 23             | 7.2   | 33           | 10.3  | 19                                  | 6.1   | 7                       | 2.3   |
| Value—\$500,000–\$999,999     |  |       |            |       |                |       |              |       |                                     |       |                         |       |
| <b>2001</b>                   |  |       |            |       |                |       |              |       |                                     |       |                         |       |
| January                       | 2  | 1.4   | 6          | 4.1   | 4              | 2.6   | 7            | 5.1   | 10                                  | 6.6   | 4                       | 2.7   |
| February                      | 1  | 0.6   | 11         | 7.4   | 7              | 4.8   | 10           | 7.6   | 7                                   | 4.6   | 4                       | 2.6   |
| March                         | 0  | 0.0   | 6          | 3.9   | 4              | 2.8   | 9            | 6.4   | 9                                   | 6.3   | 4                       | 3.1   |
| Value—\$1,000,000–\$4,999,999 |  |       |            |       |                |       |              |       |                                     |       |                         |       |
| <b>2001</b>                   |  |       |            |       |                |       |              |       |                                     |       |                         |       |
| January                       | 1  | 1.0   | 3          | 7.5   | 1              | 4.1   | 8            | 17.2  | 9                                   | 22.7  | 15                      | 34.3  |
| February                      | 0  | 0.0   | 7          | 13.8  | 4              | 6.6   | 10           | 18.0  | 10                                  | 14.2  | 6                       | 15.8  |
| March                         | 1  | 1.2   | 8          | 13.3  | 6              | 9.9   | 13           | 24.8  | 9                                   | 16.2  | 10                      | 23.6  |
| Value—\$5,000,000 and over    |  |       |            |       |                |       |              |       |                                     |       |                         |       |
| <b>2001</b>                   |  |       |            |       |                |       |              |       |                                     |       |                         |       |
| January                       | 2  | 24.8  | 0          | 0.0   | 0              | 0.0   | 1            | 5.8   | 2                                   | 10.7  | 2                       | 25.2  |
| February                      | 0  | 0.0   | 1          | 8.4   | 0              | 0.0   | 4            | 49.3  | 1                                   | 5.0   | 2                       | 15.5  |
| March                         | 0  | 0.0   | 2          | 80.0  | 0              | 0.0   | 2            | 11.7  | 2                                   | 11.2  | 3                       | 118.8 |
| Value—Total                   |  |       |            |       |                |       |              |       |                                     |       |                         |       |
| <b>1997-1998</b>              | 134  | 229.4 | 998        | 447.4 | 672            | 235.5 | 988          | 425.5 | 759                                 | 498.2 | 410                     | 300.4 |
| <b>1998-1999</b>              | 140  | 156.5 | 1 295      | 639.8 | 773            | 264.4 | 1 056        | 389.4 | 793                                 | 492.4 | 451                     | 398.6 |
| <b>1999-2000</b>              | 174  | 169.3 | 1 550      | 560.1 | 849            | 371.1 | 1 192        | 539.3 | 970                                 | 518.3 | 550                     | 410.6 |
| <b>2001</b>                   |  |       |            |       |                |       |              |       |                                     |       |                         |       |
| January                       | 10   | 27.7  | 78         | 20.8  | 44             | 13.4  | 77           | 36.9  | 64                                  | 48.3  | 58                      | 69.2  |
| February                      | 7  | 1.5   | 137        | 44.3  | 40             | 17.0  | 101          | 87.0  | 53                                  | 29.0  | 51                      | 39.8  |
| March                         | 7  | 2.2   | 147        | 112.3 | 55             | 22.1  | 112          | 58.2  | 71                                  | 42.7  | 50                      | 150.3 |

NON-RESIDENTIAL BUILDING APPROVED, Jobs By Value Range: **Original** *continued*

| Period                        | Religious..... |      | Health..... |       | Entertainment and recreational..... |       | Miscellaneous..... |       | Total non-residential building..... |         |
|-------------------------------|----------------|------|-------------|-------|-------------------------------------|-------|--------------------|-------|-------------------------------------|---------|
|                               | no.            | \$m  | no.         | \$m   | no.                                 | \$m   | no.                | \$m   | no.                                 | \$m     |
| Value—\$50,000—\$199,999      |                |      |             |       |                                     |       |                    |       |                                     |         |
| <b>2001</b>                   |                |      |             |       |                                     |       |                    |       |                                     |         |
| January                       | 2              | 0.2  | 6           | 0.6   | 13                                  | 1.1   | 16                 | 1.4   | 213                                 | 20.9    |
| February                      | 1              | 0.1  | 6           | 0.6   | 14                                  | 1.6   | 14                 | 1.4   | 261                                 | 25.5    |
| March                         | 2              | 0.2  | 5           | 0.4   | 20                                  | 2.2   | 17                 | 1.9   | 298                                 | 28.6    |
| Value—\$200,000—\$499,999     |                |      |             |       |                                     |       |                    |       |                                     |         |
| <b>2001</b>                   |                |      |             |       |                                     |       |                    |       |                                     |         |
| January                       | 1              | 0.3  | 2           | 0.4   | 8                                   | 2.5   | 7                  | 2.1   | 96                                  | 28.1    |
| February                      | 0              | 0.0  | 3           | 1.2   | 3                                   | 0.8   | 5                  | 1.4   | 89                                  | 26.3    |
| March                         | 3              | 0.8  | 5           | 1.2   | 6                                   | 1.8   | 9                  | 2.7   | 123                                 | 37.4    |
| Value—\$500,000—\$999,999     |                |      |             |       |                                     |       |                    |       |                                     |         |
| <b>2001</b>                   |                |      |             |       |                                     |       |                    |       |                                     |         |
| January                       | 0              | 0.0  | 2           | 1.7   | 1                                   | 0.6   | 1                  | 0.7   | 37                                  | 25.4    |
| February                      | 0              | 0.0  | 0           | 0.0   | 3                                   | 2.0   | 2                  | 1.4   | 45                                  | 31.0    |
| March                         | 1              | 0.6  | 2           | 1.6   | 6                                   | 4.4   | 2                  | 1.8   | 43                                  | 30.9    |
| Value—\$1,000,000—\$4,999,999 |                |      |             |       |                                     |       |                    |       |                                     |         |
| <b>2001</b>                   |                |      |             |       |                                     |       |                    |       |                                     |         |
| January                       | 0              | 0.0  | 7           | 23.0  | 2                                   | 2.7   | 2                  | 7.2   | 48                                  | 119.7   |
| February                      | 0              | 0.0  | 4           | 8.8   | 3                                   | 3.4   | 0                  | 0.0   | 44                                  | 80.5    |
| March                         | 0              | 0.0  | 5           | 13.0  | 5                                   | 12.0  | 1                  | 3.2   | 58                                  | 117.0   |
| Value—\$5,000,000 and over    |                |      |             |       |                                     |       |                    |       |                                     |         |
| <b>2001</b>                   |                |      |             |       |                                     |       |                    |       |                                     |         |
| January                       | 0              | 0.0  | 1           | 6.1   | 0                                   | 0.0   | 0                  | 0.0   | 8                                   | 72.7    |
| February                      | 0              | 0.0  | 1           | 16.4  | 0                                   | 0.0   | 0                  | 0.0   | 9                                   | 94.5    |
| March                         | 0              | 0.0  | 1           | 9.0   | 4                                   | 42.0  | 2                  | 14.9  | 16                                  | 287.6   |
| Value—Total                   |                |      |             |       |                                     |       |                    |       |                                     |         |
| <b>1997-1998</b>              | 61             | 16.9 | 200         | 264.6 | 238                                 | 478.4 | 315                | 168.3 | 4 775                               | 3 064.5 |
| <b>1998-1999</b>              | 65             | 20.4 | 251         | 232.1 | 280                                 | 412.2 | 341                | 119.7 | 5 445                               | 3 125.8 |
| <b>1999-2000</b>              | 55             | 26.5 | 303         | 343.0 | 321                                 | 159.4 | 325                | 117.0 | 6 289                               | 3 214.9 |
| <b>2001</b>                   |                |      |             |       |                                     |       |                    |       |                                     |         |
| January                       | 3              | 0.4  | 18          | 31.8  | 24                                  | 6.9   | 26                 | 11.3  | 402                                 | 266.8   |
| February                      | 1              | 0.1  | 14          | 27.0  | 23                                  | 7.8   | 21                 | 4.2   | 448                                 | 257.8   |
| March                         | 6              | 1.6  | 18          | 25.2  | 41                                  | 62.4  | 31                 | 24.5  | 538                                 | 501.5   |

## VALUE OF NON-RESIDENTIAL BUILDING APPROVED: Original

| Period                      | Hotels, motels<br>and other<br>short term<br>accommodation | Shops | Factories | Offices | Other<br>business<br>premises | Educational | Religious | Health | Entertainment and<br>recreational | Miscellaneous | Total non-residential<br>building |
|-----------------------------|--|-------|-----------|---------|-------------------------------|-------------|-----------|--------|-----------------------------------|---------------|-----------------------------------|
| PRIVATE SECTOR (\$ million) |  |       |           |         |                               |             |           |        |                                   |               |                                   |
| <b>1997-1998</b>            | 227.7  | 440.9 | 232.6     | 381.1   | 418.8                         | 117.7       | 17.0      | 112.9  | 435.0                             | 93.2          | <b>2 476.9</b>                    |
| <b>1998-1999</b>            | 150.3  | 609.6 | 258.3     | 296.5   | 434.5                         | 118.0       | 19.7      | 122.7  | 204.1                             | 48.9          | <b>2 262.5</b>                    |
| <b>1999-2000</b>            | 167.7  | 554.0 | 369.6     | 474.9   | 505.3                         | 171.0       | 26.5      | 180.4  | 93.0                              | 79.6          | <b>2 622.1</b>                    |
| <b>2000</b>                 |  |       |           |         |                               |             |           |        |                                   |               |                                   |
| March                       | 0.7  | 36.7  | 25.1      | 36.0    | 43.5                          | 12.1        | 0.3       | 20.8   | 3.1                               | 7.6           | <b>185.8</b>                      |
| April                       | 8.6  | 64.5  | 76.0      | 23.9    | 46.7                          | 10.3        | 1.9       | 8.5    | 7.4                               | 9.4           | <b>257.2</b>                      |
| May                         | 2.6  | 35.7  | 41.5      | 28.1    | 49.5                          | 13.6        | 1.1       | 31.1   | 5.9                               | 4.0           | <b>213.2</b>                      |
| June                        | 5.6  | 126.6 | 31.5      | 48.5    | 44.1                          | 9.0         | 0.4       | 22.0   | 23.2                              | 13.3          | <b>324.2</b>                      |
| July                        | 4.1  | 53.5  | 25.6      | 27.7    | 32.1                          | 15.2        | 0.5       | 2.3    | 8.3                               | 141.0         | <b>310.3</b>                      |
| August                      | 3.0  | 78.1  | 17.8      | 44.9    | 26.6                          | 6.6         | 2.7       | 21.7   | 12.0                              | 5.6           | <b>219.0</b>                      |
| September                   | 2.0  | 62.0  | 25.2      | 36.7    | 36.5                          | 18.4        | 0.7       | 17.0   | 18.5                              | 9.8           | <b>226.9</b>                      |
| October                     | 4.9  | 36.8  | 10.7      | 51.4    | 21.0                          | 24.6        | 0.9       | 8.1    | 19.8                              | 6.9           | <b>185.1</b>                      |
| November                    | 3.5  | 32.9  | 26.3      | 40.9    | 64.9                          | 26.2        | 3.5       | 14.9   | 5.6                               | 7.8           | <b>226.5</b>                      |
| December                    | 27.4   | 20.9  | 26.3      | 108.2   | 15.4                          | 40.0        | 2.0       | 24.7   | 9.9                               | 4.7           | <b>279.4</b>                      |
| <b>2001</b>                 |  |       |           |         |                               |             |           |        |                                   |               |                                   |
| January                     | 26.9   | 20.4  | 13.1      | 33.2    | 42.6                          | 19.7        | 0.4       | 13.5   | 5.0                               | 6.7           | <b>181.5</b>                      |
| February                    | 1.4  | 44.3  | 16.6      | 82.2    | 28.8                          | 11.0        | 0.1       | 9.7    | 6.1                               | 2.4           | <b>202.7</b>                      |
| March                       | 2.1  | 112.3 | 22.1      | 49.1    | 40.9                          | 17.9        | 1.6       | 19.6   | 35.6                              | 21.8          | <b>323.0</b>                      |
| PUBLIC SECTOR (\$ million)  |  |       |           |         |                               |             |           |        |                                   |               |                                   |
| <b>1997-1998</b>            | 1.5  | 6.4   | 3.0       | 44.4    | 79.4                          | 182.7       | 0.0       | 151.8  | 43.3                              | 75.1          | <b>587.7</b>                      |
| <b>1998-1999</b>            | 6.1  | 30.2  | 6.3       | 93.0    | 58.1                          | 280.6       | 0.8       | 109.3  | 207.9                             | 70.9          | <b>863.2</b>                      |
| <b>1999-2000</b>            | 1.4  | 6.1   | 1.4       | 64.5    | 13.1                          | 239.7       | 0.0       | 162.8  | 66.5                              | 37.3          | <b>592.9</b>                      |
| <b>2000</b>                 |  |       |           |         |                               |             |           |        |                                   |               |                                   |
| March                       | 0.5  | 1.1   | 0.1       | 5.7     | 0.4                           | 4.5         | 0.0       | 7.7    | 8.4                               | 1.6           | <b>30.0</b>                       |
| April                       | 0.0  | 0.3   | 0.9       | 14.1    | 0.4                           | 18.3        | 0.0       | 15.8   | 18.2                              | 2.3           | <b>70.2</b>                       |
| May                         | 0.1  | 0.5   | 0.1       | 2.3     | 0.1                           | 14.0        | 0.0       | 2.7    | 3.5                               | 3.8           | <b>27.0</b>                       |
| June                        | 0.4  | 0.1   | 0.0       | 3.3     | 1.1                           | 7.3         | 0.0       | 0.1    | 7.6                               | 6.6           | <b>26.5</b>                       |
| July                        | 0.3  | 1.8   | 0.0       | 8.1     | 0.1                           | 220.6       | 0.0       | 6.0    | 11.3                              | 1.6           | <b>249.9</b>                      |
| August                      | 0.0  | 0.6   | 0.0       | 3.7     | 0.2                           | 32.6        | 0.0       | 3.2    | 6.1                               | 2.4           | <b>48.7</b>                       |
| September                   | 0.0  | 0.2   | 0.1       | 1.5     | 2.1                           | 34.5        | 0.0       | 1.8    | 14.1                              | 11.8          | <b>66.1</b>                       |
| October                     | 0.4  | 0.3   | 0.6       | 2.3     | 2.9                           | 28.8        | 0.0       | 1.7    | 1.8                               | 1.3           | <b>40.1</b>                       |
| November                    | 0.3  | 0.1   | 0.0       | 3.5     | 1.9                           | 28.3        | 0.0       | 8.6    | 18.2                              | 3.1           | <b>63.9</b>                       |
| December                    | 0.0  | 0.3   | 0.0       | 2.7     | 0.0                           | 14.4        | 0.0       | 9.4    | 2.7                               | 2.1           | <b>31.6</b>                       |
| <b>2001</b>                 |  |       |           |         |                               |             |           |        |                                   |               |                                   |
| January                     | 0.8  | 0.3   | 0.3       | 3.7     | 5.7                           | 49.6        | 0.0       | 18.3   | 1.9                               | 4.6           | <b>85.3</b>                       |
| February                    | 0.1  | 0.0   | 0.4       | 4.8     | 0.2                           | 28.8        | 0.0       | 17.3   | 1.7                               | 1.8           | <b>55.1</b>                       |
| March                       | 0.1  | 0.1   | 0.0       | 9.0     | 1.8                           | 132.4       | 0.0       | 5.6    | 26.8                              | 2.8           | <b>178.5</b>                      |
| TOTAL (\$ million)          |  |       |           |         |                               |             |           |        |                                   |               |                                   |
| <b>1997-1998</b>            | 229.3  | 447.4 | 235.6     | 425.5   | 498.2                         | 300.4       | 17.0      | 264.6  | 478.3                             | 168.3         | <b>3 064.5</b>                    |
| <b>1998-1999</b>            | 156.4  | 639.8 | 264.6     | 389.4   | 492.6                         | 398.6       | 20.5      | 232.0  | 412.0                             | 119.8         | <b>3 125.7</b>                    |
| <b>1999-2000</b>            | 169.1  | 560.1 | 371.1     | 539.4   | 518.4                         | 410.8       | 26.5      | 343.1  | 159.5                             | 116.9         | <b>3 215.0</b>                    |
| <b>2000</b>                 |  |       |           |         |                               |             |           |        |                                   |               |                                   |
| March                       | 1.3  | 37.8  | 25.1      | 41.7    | 43.8                          | 16.5        | 0.3       | 28.6   | 11.5                              | 9.2           | <b>215.8</b>                      |
| April                       | 8.6  | 64.7  | 76.9      | 38.0    | 47.1                          | 28.5        | 1.9       | 24.3   | 25.6                              | 11.7          | <b>327.3</b>                      |
| May                         | 2.7  | 36.2  | 41.6      | 30.4    | 49.5                          | 27.6        | 1.1       | 33.8   | 9.5                               | 7.8           | <b>240.2</b>                      |
| June                        | 6.0  | 126.8 | 31.5      | 51.7    | 45.2                          | 16.3        | 0.4       | 22.1   | 30.8                              | 19.9          | <b>350.7</b>                      |
| July                        | 4.4  | 55.3  | 25.6      | 35.8    | 32.2                          | 235.8       | 0.5       | 8.3    | 19.7                              | 142.5         | <b>560.1</b>                      |
| August                      | 3.0  | 78.7  | 17.8      | 48.6    | 26.7                          | 39.2        | 2.7       | 24.9   | 18.1                              | 8.0           | <b>267.7</b>                      |
| September                   | 2.0  | 62.2  | 25.3      | 38.2    | 38.6                          | 52.9        | 0.7       | 18.9   | 32.5                              | 21.6          | <b>292.9</b>                      |
| October                     | 5.4  | 37.1  | 11.3      | 53.6    | 23.8                          | 53.4        | 0.9       | 9.8    | 21.7                              | 8.3           | <b>225.3</b>                      |
| November                    | 3.8  | 33.0  | 26.3      | 44.4    | 66.8                          | 54.4        | 3.5       | 23.4   | 23.8                              | 10.9          | <b>290.4</b>                      |
| December                    | 27.4   | 21.2  | 26.3      | 111.0   | 15.4                          | 54.4        | 2.0       | 34.1   | 12.6                              | 6.8           | <b>311.0</b>                      |
| <b>2001</b>                 |  |       |           |         |                               |             |           |        |                                   |               |                                   |
| January                     | 27.7   | 20.8  | 13.4      | 36.9    | 48.3                          | 69.2        | 0.4       | 31.8   | 6.9                               | 11.3          | <b>266.8</b>                      |
| February                    | 1.5  | 44.3  | 17.0      | 87.0    | 29.0                          | 39.8        | 0.1       | 27.0   | 7.8                               | 4.2           | <b>257.8</b>                      |
| March                       | 2.2  | 112.3 | 22.1      | 58.2    | 42.7                          | 150.3       | 1.6       | 25.2   | 62.4                              | 24.5          | <b>501.5</b>                      |



## BUILDING APPROVED IN THE MELBOURNE STATISTICAL DIVISION: Original

| Period           | DWELLINGS (no.)..... |                                |                    | VALUE (\$'000)..... |                                |  |                            |                          |                |
|------------------|----------------------|--------------------------------|--------------------|---------------------|--------------------------------|--|----------------------------|--------------------------|----------------|
|                  | New houses           | New other residential building | Total dwellings(a) | New houses          | New other residential building | Alterations and additions to residential building(b) | Total residential building | Non-residential building | Total building |
| PRIVATE SECTOR   |                      |                                |                    |                     |                                |  |                            |                          |                |
| <b>1998-1999</b> | 20 515               | 8 100                          | 30 165             | 2 563 813           | 986 485                        | 771 135  | 4 321 432                  | 1 918 597                | 6 240 029      |
| <b>1999-2000</b> | 25 642               | 11 124                         | 38 263             | 3 537 299           | 1 515 440                      | 986 017  | 6 038 756                  | 2 226 783                | 8 265 540      |
| <b>2000</b>      |                      |                                |                    |                     |                                |  |                            |                          |                |
| March            | 2 604                | 1 205                          | 3 874              | 367 888             | 165 411                        | 82 668   | 615 968                    | 152 967                  | 768 935        |
| April            | 1 793                | 755                            | 2 804              | 249 719             | 86 559                         | 96 130   | 432 409                    | 232 119                  | 664 527        |
| May              | 1 822                | 701                            | 2 595              | 262 045             | 95 433                         | 81 832   | 439 309                    | 158 100                  | 597 409        |
| June             | 1 747                | 687                            | 2 513              | 250 378             | 94 465                         | 88 661   | 433 504                    | 283 154                  | 716 657        |
| July             | 1 367                | 952                            | 2 790              | 203 442             | 192 248                        | 113 383  | 509 073                    | 284 829                  | 793 902        |
| August           | 1 290                | 658                            | 2 118              | 200 476             | 90 717                         | 81 011   | 372 203                    | 192 998                  | 565 201        |
| September        | 1 350                | 559                            | 1 939              | 196 991             | 74 985                         | 56 062   | 328 038                    | 179 274                  | 507 312        |
| October          | 957                  | 423                            | 1 442              | 145 963             | 61 816                         | 79 959   | 287 738                    | 146 968                  | 434 706        |
| November         | 1 731                | 543                            | 2 409              | 269 008             | 86 333                         | 82 453   | 437 794                    | 194 799                  | 632 593        |
| December         | 1 175                | 1 201                          | 2 505              | 178 664             | 214 815                        | 66 268   | 459 748                    | 239 483                  | 699 231        |
| <b>2001</b>      |                      |                                |                    |                     |                                |  |                            |                          |                |
| January          | 1 120                | 863                            | 2 012              | 170 362             | 139 882                        | 51 960   | 362 205                    | 157 901                  | 520 106        |
| February         | 1 664                | 852                            | 2 540              | 245 200             | 119 691                        | 61 736   | 426 627                    | 183 105                  | 609 732        |
| March            | 1 553                | 1 029                          | 2 710              | 233 164             | 200 189                        | 98 142   | 531 495                    | 276 978                  | 808 472        |
| PUBLIC SECTOR    |                      |                                |                    |                     |                                |  |                            |                          |                |
| <b>1998-1999</b> | 415                  | 246                            | 666                | 34 265              | 15 344                         | 29 140   | 78 748                     | 723 688                  | 802 437        |
| <b>1999-2000</b> | 395                  | 216                            | 629                | 35 716              | 15 361                         | 30 752   | 81 829                     | 427 375                  | 509 204        |
| <b>2000</b>      |                      |                                |                    |                     |                                |  |                            |                          |                |
| March            | 9                    | 0                              | 9                  | 783                 | 0                              | 2 259  | 3 042                      | 18 097                   | 21 139         |
| April            | 18                   | 12                             | 40                 | 1 449               | 846                            | 1 633  | 3 928                      | 57 800                   | 61 728         |
| May              | 37                   | 3                              | 40                 | 3 340               | 200                            | 1 834  | 5 374                      | 15 328                   | 20 702         |
| June             | 24                   | 19                             | 43                 | 2 068               | 1 192                          | 2 399  | 5 659                      | 22 217                   | 27 875         |
| July             | 17                   | 19                             | 36                 | 1 637               | 1 367                          | 1 539  | 4 543                      | 235 644                  | 240 187        |
| August           | 10                   | 22                             | 32                 | 1 391               | 1 677                          | 7 793  | 10 860                     | 34 798                   | 45 658         |
| September        | 32                   | 0                              | 32                 | 3 256               | 0                              | 1 077  | 4 332                      | 36 969                   | 41 301         |
| October          | 42                   | 26                             | 68                 | 4 902               | 1 784                          | 7 384  | 14 070                     | 31 344                   | 45 414         |
| November         | 2                    | 13                             | 15                 | 209                 | 852                            | 335  | 1 397                      | 43 118                   | 44 515         |
| December         | 11                   | 0                              | 11                 | 1 697               | 0                              | 4 921  | 6 618                      | 20 388                   | 27 006         |
| <b>2001</b>      |                      |                                |                    |                     |                                |  |                            |                          |                |
| January          | 24                   | 27                             | 51                 | 2 721               | 2 178                          | 7 051  | 11 950                     | 67 846                   | 79 796         |
| February         | 23                   | 2                              | 25                 | 3 196               | 140                            | 12 135   | 15 471                     | 49 623                   | 65 094         |
| March            | 17                   | 2                              | 19                 | 2 695               | 180                            | 8 574  | 11 449                     | 157 625                  | 169 073        |
| TOTAL            |                      |                                |                    |                     |                                |  |                            |                          |                |
| <b>1998-1999</b> | 20 930               | 8 346                          | 30 831             | 2 598 077           | 1 001 829                      | 800 275  | 4 400 181                  | 2 642 285                | 7 042 466      |
| <b>1999-2000</b> | 26 037               | 11 340                         | 38 892             | 3 573 015           | 1 530 801                      | 1 016 769  | 6 120 585                  | 2 654 159                | 8 774 744      |
| <b>2000</b>      |                      |                                |                    |                     |                                |  |                            |                          |                |
| March            | 2 613                | 1 205                          | 3 883              | 368 671             | 165 411                        | 84 928   | 619 010                    | 171 063                  | 790 074        |
| April            | 1 811                | 767                            | 2 844              | 251 168             | 87 406                         | 97 764   | 436 337                    | 289 919                  | 726 256        |
| May              | 1 859                | 704                            | 2 635              | 265 385             | 95 633                         | 83 666   | 444 683                    | 173 428                  | 618 111        |
| June             | 1 771                | 706                            | 2 556              | 252 446             | 95 657                         | 91 059   | 439 162                    | 305 370                  | 744 532        |
| July             | 1 384                | 971                            | 2 826              | 205 079             | 193 615                        | 114 922  | 513 616                    | 520 473                  | 1 034 088      |
| August           | 1 300                | 680                            | 2 150              | 201 866             | 92 393                         | 88 804   | 383 064                    | 227 796                  | 610 860        |
| September        | 1 382                | 559                            | 1 971              | 200 246             | 74 985                         | 57 138   | 332 370                    | 216 243                  | 548 612        |
| October          | 999                  | 449                            | 1 510              | 150 865             | 63 601                         | 87 343   | 301 808                    | 178 312                  | 480 120        |
| November         | 1 733                | 556                            | 2 424              | 269 217             | 87 185                         | 82 788   | 439 190                    | 237 917                  | 677 107        |
| December         | 1 186                | 1 201                          | 2 516              | 180 361             | 214 815                        | 71 189   | 466 366                    | 259 871                  | 726 237        |
| <b>2001</b>      |                      |                                |                    |                     |                                |  |                            |                          |                |
| January          | 1 144                | 890                            | 2 063              | 173 084             | 142 060                        | 59 012   | 374 155                    | 225 746                  | 599 901        |
| February         | 1 687                | 854                            | 2 565              | 248 396             | 119 831                        | 73 871   | 442 098                    | 232 729                  | 674 826        |
| March            | 1 570                | 1 031                          | 2 729              | 235 858             | 200 369                        | 106 716  | 542 943                    | 434 602                  | 977 546        |

(a) Refer to footnote (a) in Table 12.

(b) Refer to the Explanatory Notes paragraph 18.

## BUILDING APPROVED IN STATISTICAL AREAS—Mar Qtr 2001

DWELLINGS (no.)..... VALUE (\$'000).....

|                                 | New houses | New other residential building | Total dwellings(a) | New houses | New other residential buildings | Alterations and additions to residential buildings(b) | Total residential building | Non-residential building | Total building |
|---------------------------------|------------|--------------------------------|--------------------|------------|---------------------------------|---|----------------------------|--------------------------|----------------|
| STATISTICAL AREA                |            |                                |                    |            |                                 |   |                            |                          |                |
| <b>VICTORIA</b>                 | 6 176      | 2 842                          | 9 213              | 900 670    | 470 422                         | 288 748   | 1 659 839                  | 1 026 179                | 2 686 018      |
| <b>Melbourne (SD)</b>           | 4 401      | 2 775                          | 7 357              | 657 338    | 462 260                         | 239 599   | 1 359 196                  | 893 077                  | 2 252 273      |
| Inner Melbourne (SSD)           | 41         | 1 453                          | 1 535              | 10 940     | 301 337                         | 38 081  | 350 358                    | 301 588                  | 651 946        |
| Melbourne (C)–Inner             | 1          | 0                              | 3                  | 150        | 0                               | 890   | 1 040                      | 53 151                   | 54 191         |
| Melbourne (C)–S'bank–D'lands    | 0          | 281                            | 281                | 0          | 77 154                          | 37  | 77 191                     | 109 148                  | 186 339        |
| Melbourne (C)–Remainder         | 8          | 308                            | 338                | 1 507      | 57 529                          | 7 332   | 66 368                     | 65 956                   | 132 324        |
| Port Phillip (C)–St Kilda       | 9          | 570                            | 592                | 1 850      | 85 885                          | 4 906   | 92 641                     | 5 011                    | 97 652         |
| Port Phillip (C)–West           | 5          | 163                            | 171                | 1 065      | 48 310                          | 5 485   | 54 860                     | 20 993                   | 75 853         |
| Stonnington (C)–Prahran         | 14         | 68                             | 82                 | 5 906      | 22 452                          | 4 739   | 33 097                     | 20 305                   | 53 402         |
| Yarra (C)–North                 | 2          | 41                             | 44                 | 167        | 6 442                           | 10 157  | 16 767                     | 14 277                   | 31 044         |
| Yarra (C)–Richmond              | 2          | 22                             | 24                 | 295        | 3 565                           | 4 535   | 8 395                      | 12 747                   | 21 142         |
| Western Melbourne (SSD)         | 476        | 296                            | 780                | 66 870     | 28 308                          | 23 384  | 118 561                    | 39 326                   | 157 887        |
| Brimbank (C)–Keilor             | 124        | 46                             | 172                | 16 582     | 3 344                           | 2 261   | 22 186                     | 3 585                    | 25 771         |
| Brimbank (C)–Sunshine           | 151        | 15                             | 167                | 20 463     | 1 280                           | 1 072   | 22 815                     | 13 585                   | 36 400         |
| Hobsons Bay (C)–Altona          | 53         | 13                             | 66                 | 6 155      | 1 005                           | 801   | 7 961                      | 1 930                    | 9 891          |
| Hobsons Bay (C)–Williamstown    | 40         | 16                             | 57                 | 7 084      | 2 248                           | 5 037   | 14 369                     | 1 347                    | 15 716         |
| Maribymong (C)                  | 54         | 164                            | 222                | 8 598      | 15 711                          | 2 823   | 27 131                     | 9 417                    | 36 548         |
| Moonee Valley (C)–Essendon      | 34         | 34                             | 68                 | 5 737      | 3 989                           | 9 924   | 19 650                     | 8 305                    | 27 955         |
| Moonee Valley (C)–West          | 20         | 8                              | 28                 | 2 252      | 730                             | 1 466   | 4 448                      | 1 157                    | 5 605          |
| Melton–Wyndham (SSD)            | 708        | 46                             | 754                | 98 077     | 4 180                           | 2 831   | 105 088                    | 15 062                   | 120 151        |
| Melton (S)–East                 | 353        | 2                              | 355                | 48 205     | 150                             | 270   | 48 625                     | 1 880                    | 50 505         |
| Melton (S) Balance              | 33         | 4                              | 37                 | 4 989      | 240                             | 1 122   | 6 351                      | 634                      | 6 986          |
| Wyndham (C)–North West          | 14         | 0                              | 14                 | 1 885      | 0                               | 0   | 1 885                      | 0                        | 1 885          |
| Wyndham (C)–Werribee            | 125        | 38                             | 163                | 15 295     | 3 592                           | 1 129   | 20 017                     | 4 052                    | 24 069         |
| Wyndham (C)–Balance             | 183        | 2                              | 185                | 27 703     | 198                             | 309   | 28 210                     | 8 496                    | 36 706         |
| Moreland City (SSD)             | 84         | 106                            | 192                | 11 458     | 12 966                          | 7 684   | 32 107                     | 8 271                    | 40 378         |
| Moreland (C)–Brunswick          | 11         | 59                             | 72                 | 1 574      | 8 074                           | 3 612   | 13 260                     | 735                      | 13 995         |
| Moreland (C)–Coburg             | 35         | 22                             | 57                 | 4 160      | 2 272                           | 2 935   | 9 366                      | 2 956                    | 12 323         |
| Moreland (C)–North              | 38         | 25                             | 63                 | 5 723      | 2 620                           | 1 137   | 9 481                      | 4 580                    | 14 061         |
| Northern Middle Melbourne (SSD) | 143        | 93                             | 253                | 21 935     | 8 440                           | 18 370  | 48 745                     | 24 087                   | 72 832         |
| Banyule (C)–Heidelberg          | 27         | 40                             | 68                 | 4 422      | 3 520                           | 5 682   | 13 624                     | 3 988                    | 17 612         |
| Banyule (C)–North               | 25         | 19                             | 44                 | 4 725      | 1 580                           | 1 742   | 8 046                      | 2 065                    | 10 112         |
| Darebin (C)–Northcote           | 19         | 18                             | 52                 | 2 319      | 2 085                           | 5 460   | 9 864                      | 13 079                   | 22 943         |
| Darebin (C)–Preston             | 72         | 16                             | 89                 | 10 469     | 1 255                           | 5 486   | 17 210                     | 4 955                    | 22 165         |
| Hume City (SSD)                 | 331        | 30                             | 361                | 47 497     | 2 377                           | 4 001   | 53 875                     | 43 265                   | 97 140         |
| Hume (C)–Broadmeadows           | 37         | 26                             | 63                 | 4 880      | 2 076                           | 2 458   | 9 414                      | 19 435                   | 28 849         |
| Hume (C)–Craigieburn            | 222        | 2                              | 224                | 31 539     | 120                             | 727   | 32 387                     | 17 119                   | 49 506         |
| Hume (C)–Sunbury                | 72         | 2                              | 74                 | 11 077     | 181                             | 816   | 12 074                     | 6 710                    | 18 785         |
| Northern Outer Melbourne (SSD)  | 316        | 89                             | 405                | 45 217     | 5 919                           | 5 406   | 56 542                     | 21 692                   | 78 234         |
| Nillumbik (S)–South             | 22         | 0                              | 22                 | 4 910      | 0                               | 1 888   | 6 798                      | 1 160                    | 7 958          |
| Nillumbik (S)–South-West        | 26         | 0                              | 26                 | 6 066      | 0                               | 766   | 6 832                      | 3 985                    | 10 817         |
| Nillumbik (S)–Balance           | 6          | 0                              | 6                  | 720        | 0                               | 675   | 1 396                      | 0                        | 1 396          |
| Whittlesea (C)–North            | 120        | 4                              | 124                | 14 965     | 370                             | 337   | 15 672                     | 1 590                    | 17 262         |
| Whittlesea (C)–South            | 142        | 85                             | 227                | 18 556     | 5 549                           | 1 740   | 25 844                     | 14 957                   | 40 802         |
| Boroondara City (SSD)           | 69         | 44                             | 195                | 18 459     | 7 556                           | 41 063  | 67 077                     | 25 224                   | 92 301         |
| Boroondara (C)–Camberwell N.    | 24         | 19                             | 43                 | 5 786      | 2 820                           | 2 537   | 11 143                     | 6 214                    | 17 357         |
| Boroondara (C)–Camberwell S.    | 18         | 11                             | 29                 | 3 166      | 1 760                           | 10 521  | 15 447                     | 4 584                    | 20 031         |
| Boroondara (C)–Hawthorn         | 9          | 7                              | 97                 | 5 560      | 1 238                           | 24 941  | 31 739                     | 8 261                    | 40 000         |
| Boroondara (C)–Kew              | 18         | 7                              | 26                 | 3 947      | 1 738                           | 3 064   | 8 749                      | 6 165                    | 14 913         |

|  | DWELLINGS (no.)..... |                                |                    | VALUE (\$'000)..... |                                 |   |                            |                          |                |
|--|----------------------|--------------------------------|--------------------|---------------------|---------------------------------|---|----------------------------|--------------------------|----------------|
|  | New houses           | New other residential building | Total dwellings(a) | New houses          | New other residential buildings | Alterations and additions to residential buildings(b) | Total residential building | Non-residential building | Total building |
| STATISTICAL AREA                       |                      |                                |                    |                     |                                 |   |                            |                          |                |
| Eastern Middle Melbourne (SSD)         | 290                  | 206                            | 497                | 45 817              | 25 553                          | 20 419  | 91 790                     | 126 494                  | 218 283        |
| Manningham (C)–East                    | 13                   | 0                              | 13                 | 3 520               | 0                               | 1 388   | 4 908                      | 350                      | 5 258          |
| Manningham (C)–West                    | 51                   | 48                             | 99                 | 10 102              | 7 474                           | 3 088   | 20 664                     | 7 256                    | 27 920         |
| Monash (C)–South West                  | 39                   | 44                             | 84                 | 5 469               | 3 697                           | 2 466   | 11 632                     | 24 036                   | 35 668         |
| Monash (C)–Waverley East               | 43                   | 14                             | 57                 | 5 301               | 1 834                           | 2 064   | 9 199                      | 30 830                   | 40 029         |
| Monash (C)–Waverley West               | 81                   | 57                             | 138                | 12 346              | 6 541                           | 2 188   | 21 075                     | 15 081                   | 36 156         |
| Whitehorse (C)–Box Hill                | 25                   | 29                             | 54                 | 3 531               | 4 086                           | 4 145   | 11 762                     | 30 033                   | 41 796         |
| Whitehorse (C)–Nunawading E.           | 24                   | 2                              | 26                 | 3 160               | 180                             | 2 086   | 5 425                      | 4 398                    | 9 823          |
| Whitehorse (C)–Nunawading W.           | 14                   | 12                             | 26                 | 2 389               | 1 740                           | 2 995   | 7 124                      | 14 509                   | 21 633         |
| Eastern Outer Melbourne (SSD)          | 276                  | 26                             | 303                | 40 818              | 2 224                           | 8 499   | 51 541                     | 109 294                  | 160 834        |
| Knox (C)–North                         | 72                   | 20                             | 92                 | 9 621               | 1 664                           | 3 736   | 15 021                     | 20 402                   | 35 423         |
| Knox (C)–South                         | 89                   | 0                              | 89                 | 14 945              | 0                               | 981   | 15 925                     | 1 621                    | 17 547         |
| Maroondah (C)–Croydon                  | 78                   | 6                              | 84                 | 10 709              | 560                             | 1 634   | 12 904                     | 8 000                    | 20 904         |
| Maroondah (C)–Ringwood                 | 37                   | 0                              | 38                 | 5 543               | 0                               | 2 148   | 7 691                      | 79 270                   | 86 961         |
| Yarra Ranges Shire Part A (SSD)        | 155                  | 28                             | 183                | 22 641              | 2 180                           | 4 568   | 29 389                     | 22 118                   | 51 507         |
| Yarra Ranges (S)–Central               | 19                   | 0                              | 19                 | 2 281               | 0                               | 103   | 2 384                      | 2 270                    | 4 654          |
| Yarra Ranges (S)–North                 | 25                   | 0                              | 25                 | 2 983               | 0                               | 232   | 3 215                      | 195                      | 3 409          |
| Yarra Ranges (S)–South-West            | 111                  | 28                             | 139                | 17 377              | 2 180                           | 4 233   | 23 790                     | 19 654                   | 43 443         |
| Southern Melbourne (SSD)               | 309                  | 223                            | 555                | 61 821              | 50 611                          | 40 778  | 153 211                    | 47 374                   | 200 585        |
| Bayside (C)–Brighton                   | 31                   | 63                             | 94                 | 11 302              | 14 621                          | 3 579   | 29 501                     | 5 154                    | 34 656         |
| Bayside (C)–South                      | 50                   | 30                             | 86                 | 9 504               | 3 607                           | 10 066  | 23 177                     | 1 566                    | 24 743         |
| Glen Eira (C)–Caulfield                | 34                   | 4                              | 47                 | 9 679               | 820                             | 7 192   | 17 690                     | 1 397                    | 19 087         |
| Glen Eira (C)–South                    | 29                   | 10                             | 39                 | 3 978               | 1 374                           | 4 646   | 9 998                      | 2 227                    | 12 224         |
| Kingston (C)–North                     | 81                   | 9                              | 92                 | 13 222              | 1 291                           | 4 051   | 18 564                     | 14 419                   | 32 982         |
| Kingston (C)–South                     | 69                   | 14                             | 85                 | 10 959              | 1 420                           | 2 566   | 14 945                     | 4 240                    | 19 185         |
| Stonnington (C)–Malvern                | 15                   | 93                             | 112                | 3 177               | 27 480                          | 8 680   | 39 336                     | 18 371                   | 57 708         |
| Greater Dandenong City (SSD)           | 43                   | 66                             | 109                | 5 770               | 4 601                           | 2 918   | 13 289                     | 17 606                   | 30 895         |
| Gr. Dandenong (C)–Dandenong            | 18                   | 60                             | 78                 | 2 550               | 4 166                           | 1 590   | 8 306                      | 6 184                    | 14 491         |
| Gr. Dandenong (C)–Balance              | 25                   | 6                              | 31                 | 3 220               | 435                             | 1 328   | 4 983                      | 11 422                   | 16 404         |
| Southern Eastern Outer Melbourne (SSD) | 708                  | 39                             | 748                | 89 749              | 3 011                           | 8 287   | 101 047                    | 40 518                   | 141 565        |
| Cardinia (S)–North                     | 30                   | 6                              | 36                 | 3 672               | 390                             | 1 373   | 5 434                      | 1 076                    | 6 510          |
| Cardinia (S)–Pakenham                  | 90                   | 2                              | 92                 | 11 064              | 127                             | 497   | 11 688                     | 960                      | 12 648         |
| Cardinia (S)–South                     | 8                    | 0                              | 8                  | 945                 | 0                               | 1 461   | 2 405                      | 925                      | 3 330          |
| Casey (C)–Berwick                      | 306                  | 12                             | 319                | 41 589              | 1 132                           | 1 296   | 44 017                     | 17 655                   | 61 672         |
| Casey (C)–Cranbourne                   | 210                  | 0                              | 210                | 21 809              | 0                               | 1 184   | 22 993                     | 5 118                    | 28 111         |
| Casey (C)–Hallam                       | 44                   | 6                              | 50                 | 7 634               | 686                             | 1 889   | 10 209                     | 14 436                   | 24 645         |
| Casey (C)–South                        | 20                   | 13                             | 33                 | 3 037               | 676                             | 589   | 4 301                      | 349                      | 4 650          |
| Frankston City (SSD)                   | 116                  | 19                             | 136                | 15 117              | 1 654                           | 2 297   | 19 068                     | 22 316                   | 41 384         |
| Frankston (C)–East                     | 71                   | 4                              | 76                 | 9 190               | 410                             | 618   | 10 218                     | 1 478                    | 11 696         |
| Frankston (C)–West                     | 45                   | 15                             | 60                 | 5 926               | 1 245                           | 1 678   | 8 850                      | 20 838                   | 29 687         |
| Mornington Peninsula Shire (SSD)       | 336                  | 11                             | 351                | 55 152              | 1 342                           | 11 014  | 67 507                     | 28 842                   | 96 350         |
| Mornington P'sula (S)–East             | 65                   | 0                              | 65                 | 9 843               | 0                               | 1 426   | 11 268                     | 280                      | 11 548         |
| Mornington P'sula (S)–South            | 138                  | 6                              | 146                | 24 847              | 480                             | 5 825   | 31 152                     | 26 866                   | 58 018         |
| Mornington P'sula (S)–West             | 133                  | 5                              | 140                | 20 462              | 862                             | 3 763   | 25 087                     | 1 696                    | 26 783         |

DWELLINGS (no.)..... VALUE (\$'000).....

|                                   | New houses | New other residential building | Total dwellings(a) | New houses | New other residential buildings | Alterations and additions to residential buildings(b) | Total residential building | Non-residential building | Total building |
|-----------------------------------|------------|--------------------------------|--------------------|------------|---------------------------------|---|----------------------------|--------------------------|----------------|
|                                   |            |                                |                    |            |                                 |   |                            |                          |                |
| <b>Barwon (SD)</b>                | 436        | 22                             | 459                | 64 121     | 2 849                           | 10 914  | 77 884                     | 25 611                   | 103 495        |
| Greater Geelong City Part A (SSD) | 187        | 13                             | 200                | 26 548     | 1 599                           | 5 849   | 33 996                     | 11 551                   | 45 547         |
| Bellarine-Inner                   | 35         | 2                              | 37                 | 4 152      | 150                             | 415   | 4 717                      | 94                       | 4 811          |
| Corio-Inner                       | 60         | 0                              | 60                 | 8 239      | 0                               | 1 421   | 9 660                      | 7 988                    | 17 648         |
| Geelong                           | 6          | 9                              | 15                 | 620        | 1 346                           | 851   | 2 817                      | 1 604                    | 4 421          |
| Geelong West                      | 5          | 0                              | 5                  | 502        | 0                               | 1 032   | 1 534                      | 466                      | 2 000          |
| Newton                            | 3          | 0                              | 3                  | 453        | 0                               | 1 268   | 1 721                      | 1 102                    | 2 823          |
| South Barwon-Inner                | 78         | 2                              | 80                 | 12 581     | 103                             | 863   | 13 547                     | 296                      | 13 843         |
| East Barwon (SSD)                 | 195        | 3                              | 199                | 30 597     | 350                             | 3 625   | 34 572                     | 3 180                    | 37 752         |
| Greater Geelong (C) –Pt B         | 105        | 3                              | 109                | 14 614     | 350                             | 1 064   | 16 028                     | 3 120                    | 19 148         |
| Queenscliffe (B)                  | 10         | 0                              | 10                 | 1 844      | 0                               | 291   | 2 136                      | 0                        | 2 136          |
| Surf Coast (S)–East               | 53         | 0                              | 53                 | 8 989      | 0                               | 1 015   | 10 004                     | 0                        | 10 004         |
| Surf Coast (S)–West               | 27         | 0                              | 27                 | 5 150      | 0                               | 1 255   | 6 405                      | 60                       | 6 465          |
| West Barwon (SSD)                 | 54         | 6                              | 60                 | 6 976      | 900                             | 1 440   | 9 316                      | 10 880                   | 20 196         |
| Colac-Otway (S)–Colac             | 2          | 0                              | 2                  | 253        | 0                               | 130   | 383                        | 8 972                    | 9 355          |
| Colac-Otway (S)–North             | 3          | 0                              | 3                  | 312        | 0                               | 201   | 512                        | 170                      | 682            |
| Colac-Otway (S)–South             | 25         | 6                              | 31                 | 3 480      | 900                             | 295   | 4 675                      | 1 508                    | 6 183          |
| Golden Plains (S)–North-West      | 10         | 0                              | 10                 | 1 177      | 0                               | 114   | 1 291                      | 0                        | 1 291          |
| Golden Plains (S)–South-East      | 9          | 0                              | 9                  | 1 221      | 0                               | 669   | 1 890                      | 125                      | 2 015          |
| Greater Geelong (C)–Pt C          | 5          | 0                              | 5                  | 534        | 0                               | 31  | 565                        | 105                      | 670            |
| <b>Western District (SD)</b>      | 79         | 0                              | 80                 | 11 684     | 0                               | 4 617   | 16 300                     | 7 835                    | 24 135         |
| Hopkins (SSD)                     | 58         | 0                              | 59                 | 8 364      | 0                               | 3 179   | 11 543                     | 3 852                    | 15 395         |
| Corangamite (S)–North             | 6          | 0                              | 6                  | 967        | 0                               | 332   | 1 299                      | 2 228                    | 3 526          |
| Corangamite (S)–South             | 6          | 0                              | 6                  | 887        | 0                               | 192   | 1 079                      | 180                      | 1 259          |
| Moynes (S)–North-East             | 0          | 0                              | 0                  | 0          | 0                               | 0   | 0                          | 122                      | 122            |
| Moynes (S)–North-West             | 0          | 0                              | 0                  | 0          | 0                               | 40  | 40                         | 0                        | 40             |
| Moynes (S)–South                  | 9          | 0                              | 9                  | 914        | 0                               | 464   | 1 378                      | 306                      | 1 684          |
| Warrnambool (C)                   | 37         | 0                              | 38                 | 5 596      | 0                               | 2 151   | 7 748                      | 1 016                    | 8 764          |
| Lady Julia Percy Island           | 0          | 0                              | 0                  | 0          | 0                               | 0   | 0                          | 0                        | 0              |
| Glenelg (SSD)                     | 21         | 0                              | 21                 | 3 320      | 0                               | 1 438   | 4 758                      | 3 983                    | 8 741          |
| Glenelg (S)–Heywood               | 4          | 0                              | 4                  | 603        | 0                               | 137   | 740                        | 70                       | 810            |
| Glenelg (S)–North                 | 2          | 0                              | 2                  | 313        | 0                               | 35  | 348                        | 110                      | 458            |
| Glenelg (S)–Portland              | 4          | 0                              | 4                  | 591        | 0                               | 630   | 1 221                      | 3 150                    | 4 371          |
| S. Grampians (S)–Hamilton         | 8          | 0                              | 8                  | 1 578      | 0                               | 435   | 2 012                      | 603                      | 2 615          |
| S. Grampians (S)–Wannon           | 1          | 0                              | 1                  | 65         | 0                               | 60  | 125                        | 0                        | 125            |
| S. Grampians (S)–Balance          | 2          | 0                              | 2                  | 171        | 0                               | 141   | 312                        | 50                       | 362            |
| <b>Central Highlands (SD)</b>     | 163        | 12                             | 177                | 22 865     | 1 260                           | 5 260   | 29 385                     | 31 680                   | 61 065         |
| Ballarat City (SSD)               | 102        | 12                             | 114                | 14 734     | 1 260                           | 3 611   | 19 604                     | 28 491                   | 48 096         |
| Ballarat (C)–Central              | 22         | 10                             | 32                 | 2 221      | 1 130                           | 1 847   | 5 198                      | 26 304                   | 31 502         |
| Ballarat (C)–Inner North          | 63         | 2                              | 65                 | 10 043     | 130                             | 951   | 11 124                     | 1 581                    | 12 705         |
| Ballarat (C)–North                | 1          | 0                              | 1                  | 80         | 0                               | 161   | 241                        | 0                        | 241            |
| Ballarat (C)–South                | 16         | 0                              | 16                 | 2 390      | 0                               | 652   | 3 042                      | 606                      | 3 648          |
| East Central Highlands (SSD)      | 50         | 0                              | 51                 | 6 744      | 0                               | 1 305   | 8 049                      | 2 392                    | 10 441         |
| Hepburn (S)–East                  | 14         | 0                              | 14                 | 1 246      | 0                               | 473   | 1 719                      | 1 290                    | 3 009          |
| Hepburn (S)–West                  | 5          | 0                              | 5                  | 518        | 0                               | 69  | 587                        | 70                       | 657            |
| Moorabool (S)–Bacchus Marsh       | 21         | 0                              | 21                 | 3 476      | 0                               | 454   | 3 930                      | 568                      | 4 498          |
| Moorabool (S)–Ballan              | 8          | 0                              | 9                  | 1 236      | 0                               | 205   | 1 441                      | 164                      | 1 605          |
| Moorabool (S)–West                | 2          | 0                              | 2                  | 269        | 0                               | 104   | 373                        | 300                      | 673            |

|                                   | DWELLINGS (no.)..... |                                |                    | VALUE (\$'000)..... |                                 |   |                            |                          |                |
|-----------------------------------|----------------------|--------------------------------|--------------------|---------------------|---------------------------------|---|----------------------------|--------------------------|----------------|
|                                   | New houses           | New other residential building | Total dwellings(a) | New houses          | New other residential buildings | Alterations and additions to residential buildings(b) | Total residential building | Non-residential building | Total building |
| STATISTICAL AREA                  |                      |                                |                    |                     |                                 |   |                            |                          |                |
| West Central Highlands (SSD)      | 11                   | 0                              | 12                 | 1 388               | 0                               | 344   | 1 732                      | 796                      | 2 528          |
| Ararat (RC)                       | 7                    | 0                              | 7                  | 1 127               | 0                               | 195   | 1 322                      | 121                      | 1 443          |
| Pyrenees (S)—North                | 2                    | 0                              | 2                  | 80                  | 0                               | 72  | 152                        | 290                      | 442            |
| Pyrenees (S)—South                | 2                    | 0                              | 3                  | 180                 | 0                               | 78  | 258                        | 386                      | 644            |
| <b>Wimmera (SD)</b>               | <b>31</b>            | <b>0</b>                       | <b>31</b>          | <b>4 610</b>        | <b>0</b>                        | <b>894</b>  | <b>5 504</b>               | <b>1 453</b>             | <b>6 957</b>   |
| South Wimmera (SSD)               | 28                   | 0                              | 28                 | 4 055               | 0                               | 739   | 4 795                      | 1 233                    | 6 027          |
| Horsham (RC)—Central              | 14                   | 0                              | 14                 | 2 150               | 0                               | 178   | 2 328                      | 462                      | 2 790          |
| Horsham (RC)—Balance              | 4                    | 0                              | 4                  | 744                 | 0                               | 69  | 813                        | 80                       | 893            |
| N. Grampians (S)—St Arnaud        | 2                    | 0                              | 2                  | 300                 | 0                               | 40  | 340                        | 0                        | 340            |
| N. Grampians (S)—Stawell          | 8                    | 0                              | 8                  | 862                 | 0                               | 325   | 1 187                      | 591                      | 1 778          |
| West Wimmera (S)                  | 0                    | 0                              | 0                  | 0                   | 0                               | 126   | 126                        | 100                      | 226            |
| North Wimmera (SSD)               | 3                    | 0                              | 3                  | 555                 | 0                               | 155   | 710                        | 221                      | 930            |
| Hindmarsh (S)                     | 1                    | 0                              | 1                  | 183                 | 0                               | 90  | 273                        | 221                      | 493            |
| Yarriambiack (S)—North            | 0                    | 0                              | 0                  | 0                   | 0                               | 0   | 0                          | 0                        | 0              |
| Yarriambiack (S)—South            | 2                    | 0                              | 2                  | 372                 | 0                               | 65  | 437                        | 0                        | 437            |
| <b>Mallee(SD)</b>                 | <b>99</b>            | <b>0</b>                       | <b>99</b>          | <b>13 762</b>       | <b>0</b>                        | <b>3 140</b>  | <b>16 902</b>              | <b>2 937</b>             | <b>19 839</b>  |
| Mildura Rural City Part A (SSD)   | 73                   | 0                              | 73                 | 9 685               | 0                               | 1 728   | 11 413                     | 1 547                    | 12 960         |
| Mildura (RC)—Pt A                 | 73                   | 0                              | 73                 | 9 685               | 0                               | 1 728   | 11 413                     | 1 547                    | 12 960         |
| West Mallee (SSD)                 | 2                    | 0                              | 2                  | 295                 | 0                               | 151   | 446                        | 750                      | 1 196          |
| Buloke (S)—North                  | 1                    | 0                              | 1                  | 109                 | 0                               | 151   | 259                        | 750                      | 1 009          |
| Buloke (S)—South                  | 0                    | 0                              | 0                  | 0                   | 0                               | 0   | 0                          | 0                        | 0              |
| Mildura (RC)—Pt B                 | 1                    | 0                              | 1                  | 187                 | 0                               | 0   | 187                        | 0                        | 187            |
| East Mallee (SSD)                 | 24                   | 0                              | 24                 | 3 782               | 0                               | 1 261   | 5 043                      | 640                      | 5 683          |
| Gannawarra (S)                    | 6                    | 0                              | 6                  | 1 025               | 0                               | 532   | 1 557                      | 370                      | 1 927          |
| Swan Hill (RC)—Central            | 9                    | 0                              | 9                  | 1 530               | 0                               | 544   | 2 075                      | 70                       | 2 145          |
| Swan Hill (RC)—Robinvale          | 3                    | 0                              | 3                  | 391                 | 0                               | 24  | 415                        | 200                      | 615            |
| Swan Hill (RC)—Balance            | 6                    | 0                              | 6                  | 837                 | 0                               | 160   | 997                        | 0                        | 997            |
| <b>Loddon (SD)</b>                | <b>207</b>           | <b>2</b>                       | <b>211</b>         | <b>27 900</b>       | <b>140</b>                      | <b>5 266</b>  | <b>33 306</b>              | <b>22 181</b>            | <b>55 487</b>  |
| Greater Bendigo City Part A (SSD) | 96                   | 2                              | 99                 | 12 108              | 140                             | 2 041   | 14 290                     | 16 262                   | 30 552         |
| Greater Bendigo (C)—Central       | 14                   | 2                              | 16                 | 1 658               | 140                             | 425   | 2 223                      | 593                      | 2 816          |
| Greater Bendigo (C)—Eaglehawk     | 7                    | 0                              | 8                  | 732                 | 0                               | 378   | 1 109                      | 3 280                    | 4 389          |
| Greater Bendigo (C)—Inner East    | 27                   | 0                              | 27                 | 3 672               | 0                               | 530   | 4 201                      | 7 995                    | 12 196         |
| Greater Bendigo (C)—Inner North   | 4                    | 0                              | 4                  | 475                 | 0                               | 327   | 803                        | 1 789                    | 2 592          |
| Greater Bendigo (C)—Inner West    | 33                   | 0                              | 33                 | 4 115               | 0                               | 171   | 4 286                      | 2 605                    | 6 891          |
| Greater Bendigo (C)—S'saye        | 11                   | 0                              | 11                 | 1 457               | 0                               | 210   | 1 667                      | 0                        | 1 667          |
| North Loddon (SSD)                | 57                   | 0                              | 57                 | 7 395               | 0                               | 1 186   | 8 581                      | 3 053                    | 11 634         |
| C. Goldfields (S)—M'borough       | 6                    | 0                              | 6                  | 825                 | 0                               | 118   | 943                        | 135                      | 1 078          |
| C. Goldfields (S)—Balance         | 2                    | 0                              | 2                  | 109                 | 0                               | 22  | 131                        | 0                        | 131            |
| Gr Bendigo (C)—Pt B               | 20                   | 0                              | 20                 | 2 401               | 0                               | 375   | 2 776                      | 170                      | 2 946          |
| Loddon (S)—North                  | 0                    | 0                              | 0                  | 0                   | 0                               | 48  | 48                         | 567                      | 615            |
| Loddon (S)—South                  | 3                    | 0                              | 3                  | 251                 | 0                               | 150   | 401                        | 326                      | 726            |
| Mount Alexander (S)—C'maine       | 10                   | 0                              | 10                 | 1 640               | 0                               | 363   | 2 003                      | 590                      | 2 593          |
| Mount Alexander (S)—Balance       | 16                   | 0                              | 16                 | 2 168               | 0                               | 110   | 2 279                      | 1 266                    | 3 544          |
| South Loddon (SSD)                | 54                   | 0                              | 55                 | 8 397               | 0                               | 2 038   | 10 435                     | 2 866                    | 13 301         |
| Macedon Ranges (S)—Kyneton        | 14                   | 0                              | 14                 | 1 596               | 0                               | 295   | 1 891                      | 700                      | 2 591          |
| Macedon Ranges (S)—Romsey         | 16                   | 0                              | 17                 | 2 264               | 0                               | 384   | 2 648                      | 424                      | 3 072          |
| Macedon Ranges (S)—Balance        | 24                   | 0                              | 24                 | 4 537               | 0                               | 1 359   | 5 896                      | 1 742                    | 7 638          |

D WELLINGS (no.)..... VALUE (\$'000).....

|                                      | D WELLINGS (no.) |                                |                    | VALUE (\$'000) |                                 |   |                            |                          |                |
|--------------------------------------|------------------|--------------------------------|--------------------|----------------|---------------------------------|---|----------------------------|--------------------------|----------------|
|                                      | New houses       | New other residential building | Total dwellings(a) | New houses     | New other residential buildings | Alterations and additions to residential buildings(b) | Total residential building | Non-residential building | Total building |
| STATISTICAL AREA                     |                  |                                |                    |                |                                 |   |                            |                          |                |
| <b>Goulburn (SD)</b>                 | 288              | 11                             | 300                | 40 144         | 2 110                           | 6 302   | 48 556                     | 13 323                   | 61 879         |
| Greater Shepparton City Part A (SSD) | 73               | 0                              | 73                 | 10 525         | 0                               | 2 095   | 12 619                     | 5 354                    | 17 974         |
| Gr. Shepparton (C) Pt A              | 73               | 0                              | 73                 | 10 525         | 0                               | 2 095   | 12 619                     | 5 354                    | 17 974         |
| North Goulburn (SSD)                 | 98               | 0                              | 98                 | 15 249         | 0                               | 1 481   | 16 730                     | 3 314                    | 20 044         |
| Campaspe (S)–Echuca                  | 28               | 0                              | 28                 | 4 237          | 0                               | 206   | 4 443                      | 750                      | 5 193          |
| Campaspe (S)–Kyabram                 | 16               | 0                              | 16                 | 2 712          | 0                               | 191   | 2 903                      | 59                       | 2 962          |
| Campaspe (S)–Rochester               | 7                | 0                              | 7                  | 913            | 0                               | 146   | 1 060                      | 1 300                    | 2 360          |
| Campaspe (S)–South                   | 7                | 0                              | 7                  | 986            | 0                               | 0   | 986                        | 0                        | 986            |
| Gr. Shepparton (C)–Pt B East         | 2                | 0                              | 2                  | 253            | 0                               | 117   | 370                        | 0                        | 370            |
| Gr. Shepparton (C)–Pt B West         | 10               | 0                              | 10                 | 1 617          | 0                               | 106   | 1 724                      | 62                       | 1 786          |
| Moira (S)–East                       | 13               | 0                              | 13                 | 2 668          | 0                               | 293   | 2 961                      | 150                      | 3 111          |
| Moira (S)–West                       | 15               | 0                              | 15                 | 1 861          | 0                               | 422   | 2 283                      | 993                      | 3 276          |
| South Goulburn (SSD)                 | 33               | 9                              | 42                 | 3 269          | 1 950                           | 1 101   | 6 320                      | 1 533                    | 7 852          |
| Delatite (S)–Benalla                 | 8                | 0                              | 8                  | 708            | 0                               | 269   | 977                        | 200                      | 1 177          |
| Delatite (S)–North                   | 3                | 0                              | 3                  | 264            | 0                               | 96  | 360                        | 125                      | 485            |
| Delatite (S)–South                   | 13               | 9                              | 22                 | 1 395          | 1 950                           | 640   | 3 985                      | 708                      | 4 693          |
| Strathbogie (S)                      | 9                | 0                              | 9                  | 901            | 0                               | 97  | 998                        | 500                      | 1 498          |
| South West Goulburn (SSD)            | 84               | 2                              | 87                 | 11 102         | 160                             | 1 625   | 12 887                     | 3 122                    | 16 009         |
| Mitchell (S)–North                   | 4                | 0                              | 4                  | 593            | 0                               | 445   | 1 038                      | 799                      | 1 836          |
| Mitchell (S)–South                   | 53               | 2                              | 55                 | 7 796          | 160                             | 592   | 8 549                      | 1 950                    | 10 499         |
| Murrindindi (S)–East                 | 6                | 0                              | 6                  | 725            | 0                               | 459   | 1 183                      | 50                       | 1 233          |
| Murrindindi (S)–West                 | 21               | 0                              | 22                 | 1 988          | 0                               | 130   | 2 118                      | 323                      | 2 441          |
| <b>Ovens-Murray (SD)</b>             | 125              | 8                              | 133                | 17 235         | 695                             | 3 757   | 21 687                     | 6 609                    | 28 296         |
| Wodonga (SSD)                        | 70               | 6                              | 76                 | 9 669          | 539                             | 2 034   | 12 243                     | 939                      | 13 182         |
| Indigo (S)–Pt A                      | 21               | 0                              | 21                 | 2 756          | 0                               | 655   | 3 411                      | 369                      | 3 780          |
| Towong (S)–Pt A                      | 0                | 0                              | 0                  | 0              | 0                               | 91  | 91                         | 0                        | 91             |
| Wodonga (RC)                         | 49               | 6                              | 55                 | 6 914          | 539                             | 1 288   | 8 741                      | 570                      | 9 311          |
| West Ovens-Murray (SSD)              | 21               | 2                              | 23                 | 2 883          | 156                             | 807   | 3 846                      | 418                      | 4 264          |
| Indigo (S)–Pt B                      | 4                | 0                              | 4                  | 615            | 0                               | 32  | 647                        | 75                       | 722            |
| Wangaratta (RC)–Central              | 10               | 2                              | 12                 | 1 416          | 156                             | 217   | 1 788                      | 50                       | 1 838          |
| Wangaratta (RC)–North                | 4                | 0                              | 4                  | 506            | 0                               | 425   | 930                        | 205                      | 1 135          |
| Wangaratta (RC)–South                | 3                | 0                              | 3                  | 347            | 0                               | 134   | 481                        | 88                       | 569            |
| East Ovens-Murray (SSD)              | 34               | 0                              | 34                 | 4 683          | 0                               | 915   | 5 598                      | 5 252                    | 10 850         |
| Alpine (S)–East                      | 31               | 0                              | 31                 | 4 168          | 0                               | 757   | 4 925                      | 987                      | 5 912          |
| Alpine (S)–West                      | 3                | 0                              | 3                  | 514            | 0                               | 61  | 575                        | 4 265                    | 4 840          |
| Towong (S)–Pt B                      | 0                | 0                              | 0                  | 0              | 0                               | 98  | 98                         | 0                        | 98             |
| <b>East Gippsland (SD)</b>           | 78               | 2                              | 83                 | 9 725          | 220                             | 2 333   | 12 278                     | 3 780                    | 16 058         |
| East Gippsland Shire (SSD)           | 53               | 2                              | 56                 | 6 804          | 220                             | 850   | 7 874                      | 2 376                    | 10 250         |
| E. Gippsland (S)–Bairnsdale          | 36               | 0                              | 37                 | 4 578          | 0                               | 526   | 5 104                      | 1 421                    | 6 525          |
| E. Gippsland (S)–Orbost              | 8                | 0                              | 8                  | 880            | 0                               | 225   | 1 105                      | 956                      | 2 060          |
| E. Gippsland (S)–South-West          | 9                | 2                              | 11                 | 1 346          | 220                             | 41  | 1 607                      | 0                        | 1 607          |
| E. Gippsland (S)–Balance             | 0                | 0                              | 0                  | 0              | 0                               | 58  | 58                         | 0                        | 58             |
| Wellington Shire (SSD)               | 25               | 0                              | 27                 | 2 921          | 0                               | 1 483   | 4 404                      | 1 404                    | 5 808          |
| Wellington (S)–Alberton              | 0                | 0                              | 0                  | 0              | 0                               | 165   | 165                        | 191                      | 356            |
| Wellington (S)–Avon                  | 3                | 0                              | 3                  | 285            | 0                               | 35  | 320                        | 0                        | 320            |
| Wellington (S)–Maffra                | 5                | 0                              | 6                  | 922            | 0                               | 571   | 1 493                      | 223                      | 1 716          |
| Wellington (S)–Rosedale              | 10               | 0                              | 10                 | 524            | 0                               | 358   | 882                        | 50                       | 932            |
| Wellington (S)–Sale                  | 7                | 0                              | 8                  | 1 191          | 0                               | 353   | 1 545                      | 940                      | 2 485          |

|                               | DWELLINGS (no.)..... |                                |                    | VALUE (\$'000)..... |                                 |   |                            |                          |                |
|-------------------------------|----------------------|--------------------------------|--------------------|---------------------|---------------------------------|---|----------------------------|--------------------------|----------------|
|                               | New houses           | New other residential building | Total dwellings(a) | New houses          | New other residential buildings | Alterations and additions to residential buildings(b) | Total residential building | Non-residential building | Total building |
| STATISTICAL AREA              |                      |                                |                    |                     |                                 |   |                            |                          |                |
| <b>Gippsland (SD)</b>         | 269                  | 10                             | 283                | 31 285              | 889                             | 6 666   | 38 840                     | 17 693                   | 56 533         |
| La Trobe Valley (SSD)         | 48                   | 2                              | 50                 | 6 355               | 180                             | 2 484   | 9 018                      | 4 222                    | 13 240         |
| Baw Baw (S)—Pt A              | 5                    | 0                              | 5                  | 774                 | 0                               | 159   | 934                        | 0                        | 934            |
| Latrobe (C)—Moe               | 8                    | 0                              | 8                  | 971                 | 0                               | 389   | 1 360                      | 1 268                    | 2 628          |
| Latrobe (C)—Morwell           | 8                    | 0                              | 8                  | 1 160               | 0                               | 910   | 2 070                      | 944                      | 3 014          |
| Latrobe (C)—Traralgon         | 27                   | 2                              | 29                 | 3 449               | 180                             | 877   | 4 506                      | 2 010                    | 6 516          |
| Latrobe (C)—Balance           | 0                    | 0                              | 0                  | 0                   | 0                               | 149   | 149                        | 0                        | 149            |
| West Gippsland (SSD)          | 44                   | 2                              | 47                 | 6 418               | 103                             | 814   | 7 335                      | 2 854                    | 10 189         |
| Baw Baw (S)—Pt B East         | 0                    | 0                              | 0                  | 0                   | 0                               | 80  | 80                         | 55                       | 135            |
| Baw Baw (S)—Pt B West         | 44                   | 2                              | 47                 | 6 418               | 103                             | 734   | 7 255                      | 2 799                    | 10 054         |
| Yarra Ranges (S)—Pt B         | 0                    | 0                              | 0                  | 0                   | 0                               | 0   | 0                          | 0                        | 0              |
| South Gippsland (SSD)         | 177                  | 6                              | 186                | 18 513              | 606                             | 3 368   | 22 487                     | 10 617                   | 33 103         |
| Bass Coast (S)—Phillip Island | 62                   | 3                              | 66                 | 5 912               | 291                             | 874   | 7 076                      | 1 025                    | 8 101          |
| Bass Coast (S)—Balance        | 70                   | 3                              | 75                 | 7 864               | 315                             | 1 656   | 9 835                      | 3 930                    | 13 765         |
| South Gippsland (S)—Central   | 21                   | 0                              | 21                 | 2 198               | 0                               | 220   | 2 418                      | 662                      | 3 080          |
| South Gippsland (S)—East      | 17                   | 0                              | 17                 | 1 879               | 0                               | 373   | 2 252                      | 0                        | 2 252          |
| South Gippsland (S)—West      | 7                    | 0                              | 7                  | 660                 | 0                               | 245   | 905                        | 5 000                    | 5 905          |
| French Island                 | 0                    | 0                              | 0                  | 0                   | 0                               | 0   | 0                          | 0                        | 0              |
| Bass Strait Islands           | 0                    | 0                              | 0                  | 0                   | 0                               | 0   | 0                          | 0                        | 0              |
| STATISTICAL DISTRICT          |                      |                                |                    |                     |                                 |   |                            |                          |                |
| Albury-Wodonga (NSW/Vic)      | 128                  | 6                              | 135                | 17 154              | 539                             | 3 450   | 21 143                     | 3 479                    | 24 622         |
| Geelong Vic                   | 187                  | 13                             | 200                | 26 548              | 1 599                           | 5 849   | 33 996                     | 11 551                   | 45 547         |
| Ballarat Vic                  | 102                  | 12                             | 114                | 14 734              | 1 260                           | 3 611   | 19 604                     | 28 491                   | 48 096         |
| Bendigo Vic                   | 96                   | 2                              | 99                 | 12 108              | 140                             | 2 041   | 14 290                     | 16 262                   | 30 552         |
| Shepparton Vic                | 73                   | 0                              | 73                 | 10 525              | 0                               | 2 095   | 12 619                     | 5 354                    | 17 974         |
| La Trobe Valley Vic           | 48                   | 2                              | 50                 | 6 355               | 180                             | 2 484   | 9 018                      | 4 222                    | 13 240         |
| Mildura Vic                   | 73                   | 0                              | 73                 | 9 685               | 0                               | 1 728   | 11 413                     | 1 547                    | 12 960         |

(a) Includes conversions and dwelling units approved as part of alterations and additions or the construction of non-residential building.

(b) Refer to Explanatory Notes paragraph 18.

## EXPLANATORY NOTES

### INTRODUCTION

**1** This publication presents monthly details of building work approved.

### SCOPE

**2** Statistics of building work approved are compiled from:

- permits issued by local government authorities and other principal certifying authorities;
- contracts let or day labour work authorised by Commonwealth, State, semi-government and local government authorities;
- major building approvals in areas not subject to normal administrative approval e.g. building on remote mine sites.

**3** The scope of the survey comprises the following:

- construction of new buildings;
- alterations and additions to existing buildings;
- approved non-structural renovation and refurbishment work;
- approved installation of integral building fixtures.

**4** From July 1990, the statistics include:

- all approved new residential building valued at \$10,000 or more;
- approved alterations and additions to residential building valued at \$10,000 or more;
- all approved non-residential building jobs valued at \$50,000 or more.

**5** Excluded from the statistics is construction activity not defined as building (e.g. roads, bridges, railways, earthworks, etc.). Statistics for this activity can be found in *Engineering Construction Activity, Australia* (Cat. no. 8762.0).

### VALUE DATA

**6** Statistics on the value of building work approved are derived by aggregating the estimated 'value of building work when completed' as reported on building approval documents provided to local councils or other building approval authorities. Conceptually these value data should exclude the value of land and landscaping but include site preparation costs. These estimates are usually a reliable indicator of the completed value of 'houses'. However, for 'other residential buildings' and 'non-residential buildings', they can differ significantly from the completed value of the building as final costs and contracts have not been established before council approval is sought and gained.

**7** The ABS generally accepts values provided by approving bodies. Every effort is made to ensure data are provided on a consistent basis, however, there may be instances where value data reported does not reflect the building completion value. For example, the reported value for most project homes is the contract price, which may include the cost of site preparation and landscaping. In other cases where a builder is contracted to construct a dwelling based on the owner's plans, the value may only be the builder's costs. Some councils do not use the value on approval documents, instead deriving a value based on floor area and type of structure.

**8** From July 2000, value data includes the Goods and Services Tax (GST) for residential and non-residential building approvals. The ABS has consulted with councils and other approving authorities to ensure that approval values are reported inclusive of the GST.



## EXPLANATORY NOTES

### VALUE DATA *continued*

**9** However, it is not certain that at present the GST is being reflected in all values. In particular, councils that use floor area calculation to derive a value may not have amended their formulae to take account of the GST and other price changes. Where it has been identified by a council or other approving authority that approvals submitted from its jurisdiction are on a GST-exclusive basis, the ABS has made adjustments to the data to ensure that values are consistent with other data collected and are inclusive of GST.

**10** As building work approved before 1 July 2000 attracted GST on that portion of the work not completed by 30 June it is likely, but not certain, that the value reported on approvals documents submitted before 30 June included the GST.

### OWNERSHIP

**11** Building ownership is classified as either public or private sector and is based on the sector of intended owner of the completed building at the time of approval. Residential buildings constructed by private sector builders under government housing authority schemes are classified as public sector when the authority has contracted, or intends to contract, to purchase the building on or before completion.

### BUILDING CLASSIFICATIONS

**12** Building approvals are classified both by the Type of Building (e.g. 'house', 'factory') and by the Type of Work involved (e.g. 'new', 'alterations and additions' and 'conversions'). These classifications are often used in conjunction with each other in this publication and are defined in the Glossary.

**13** The Type of Building classification refers to the intended major function of a building. A building which is ancillary to other buildings or forms a part of a group of related buildings is classified to the function of the specific building, not to the function of the group as a whole.

**14** An example is the treatment of building work approved for a factory complex. For instance, a detached administration building would be classified to Offices, a detached cafeteria building to Shops, while the factory buildings would be classified to Factories.

**15** An exception to this rule is the treatment of group accommodation buildings. For example, a student accommodation building on a university campus would be classified to Education.

**16** In the case of a large multi-function building which, at the time of approval is intended to have more than one purpose (e.g. a hotel/shops/casino project), the ABS endeavours to split the approval details according to each main function.

**17** Where this is not possible because separate details cannot be obtained, the building is classified to the predominant function of the building on the basis of the function which represents the highest proportion of the total value of the project.

**18** The Type of Work classification refers to the building activity carried out. Conversion jobs are shown separately in tables 5 and 6. However, in other tables they are included within existing categories, as follows: in tables 1, 2, 11 and 12 they are included in the appropriate Type of Building category, and in tables 3, 4, 11 and 12 they are included in the 'Alterations and additions to residential buildings' category.

### SEASONAL ADJUSTMENT

**19** Seasonal adjustment is a means of removing the estimated effects of seasonal variation from the series so that the effects of other influences can be more clearly recognised.

## EXPLANATORY NOTES

- SEASONAL ADJUSTMENT *continued*
- 20** In the seasonal adjustment of series, account has been taken of both normal seasonal factors and 'trading day' effects arising from the varying numbers of Sundays, Mondays, Tuesdays, etc. in the month. Adjustment has also been made for the influence of Easter which may affect the March and April estimates differently.
- 21** Seasonal adjustment does not remove from the series the effect of irregular or non-seasonal influences (e.g. the approval of large projects or a change in the administrative arrangements of approving authorities).
- 22** Some of the component series have been seasonally adjusted independently. Therefore, the adjusted components may not add to the adjusted totals.
- 23** As happens with all seasonally adjusted series, the seasonal factors are reviewed annually to take account of each additional year's data. The timing of this review may vary and when appropriate will be notified in the 'Data Notes' section of this publication.
- TREND ESTIMATES
- 24** Smoothing seasonally adjusted series reduces the impact of the irregular component of the seasonally adjusted series and creates trend estimates. For monthly series, these trend estimates are derived by applying a 13-term Henderson-weighted moving average to all months of the seasonally adjusted series except the last six months. Trend series are created for the last six months by applying surrogates of the Henderson moving average to the seasonally adjusted series. For further information, see *Information Paper: A Guide to Interpreting Time Series—Monitoring 'Trends': an Overview* (Cat. no. 1348.0) or contact the Assistant Director, Time Series Analysis on Canberra 02 6252 6076.
- 25** While the smoothing techniques described in paragraph 24 enable trend estimates to be produced for the latest few periods, they do result in revisions to the trend estimates as new data becomes available. Generally, revisions become smaller over time and, after three months, usually have a negligible impact on the series. Revisions to the original data and re-analysis of seasonal factors may also lead to revisions to the trend.
- CHAIN VOLUME MEASURES
- 26** The chain volume measures appearing in this publication are annually re-weighted chain Laspeyres indexes referenced to current price values in a chosen reference year. The reference year will be updated annually in the September publication. While current price estimates reflect both price and volume changes, chain volume estimates measure changes in value after the direct effects of price changes have been eliminated and therefore only reflect volume changes. The direct impact of the GST is a price change, and hence is removed from the chain volume estimates.
- 27** Further information on the nature and concepts of chain volume measures is contained in the ABS publication *Information Paper: Introduction of Chain Volume Measures in the Australian National Accounts* (Cat. no. 5248.0).
- AUSTRALIAN STANDARD  
GEOGRAPHICAL CLASSIFICATION  
(ASGC)
- 28** Area statistics are now being classified to the *Australian Standard Geographical Classification (ASGC), 2000 Edition* (Cat. no. 1216.0), effective from 1 July 2000, and ASGC terminology has been adopted in the presentation of building statistics.
- 29** Some Statistical Districts straddle State/Territory boundaries. The Albury–Wodonga Statistical District lies partly in Victoria and partly in New South Wales.

## EXPLANATORY NOTES

### UNPUBLISHED DATA

**30** The ABS can also provide some unpublished building approvals data. At Statistical Local Area and Collection District, this includes new houses, floor area, material of outer wall, floor and roof. A charge may be made for providing unpublished data.

### RELATED PUBLICATIONS

**31** Users may also wish to refer to the following publications:

- *Building Activity, Australia* (Cat. no. 8752.0)
- *Building Activity, Australia: Dwelling Unit Commencements* (Cat. no. 8750.0)
- *Building Activity, Building Work Done* (Cat. no. 8755.0)
- *Building Activity, Victoria* (Cat. no. 8752.2)
- *Building Approvals, Australia* (Cat. no. 8731.0)
- *Engineering Construction Activity, Australia* (Cat. no. 8762.0)
- *House Price Indexes: Eight Capital Cities* (Cat. no. 6416.0)
- *Housing Finance for Owner Occupation, Australia* (Cat. no. 5609.0)
- *Price Index of Materials Used in Building Other than House Building, Six State Capital Cities* (Cat. no. 6407.0)
- *Price Index of Materials Used in House Building, Six State Capital Cities* (Cat. no. 6408.0)

**32** While building approvals value series are shown inclusive of GST, this is different to the value series shown in the Building Activity publications (Cat. nos 8752.0, 8752.1 and 8755.0), in which residential work will be published inclusive of GST and non-residential work exclusive of GST. In the *Engineering Construction Activity, Australia* (Cat. no. 8762.0) all values will exclude GST.

### ROUNDING

**33** When figures have been rounded, discrepancies may occur between sums of the component items and totals.

### SYMBOLS AND OTHER USAGES

|        |                         |
|--------|-------------------------|
| n.a.   | not available           |
| n.y.a. | not yet available       |
| B      | Borough                 |
| C      | City                    |
| RC     | Rural City              |
| SD     | Statistical Division    |
| SSD    | Statistical Subdivision |
| S      | Shire                   |

## GLOSSARY

|   |  |
|---|--|
| <b>Alterations and additions</b>                          | Building activity carried out on existing buildings. Includes adding to or diminishing floor area, altering the structural design of a building and affixing rigid components which are integral to the functioning of the building.   |
| <b>Alterations and additions to residential buildings</b> | Alterations and additions carried out on existing residential buildings, which may result in the creation of new dwelling units. See also Explanatory Notes paragraph 12.  |
| <b>Building</b>   | A building is a rigid, fixed and permanent structure which has a roof. Its intended purpose is primarily to house people, plant, machinery, vehicles, goods or livestock. An integral feature of a building's design is the provision for regular access by persons in order to satisfy its intended use.  |
| <b>Conversion</b>   | Building activity which converts a non-residential building to a residential building, e.g. conversion of a warehouse to residential apartments. Conversion is considered to be a special type of alteration, and these jobs have been separately identified as such from the July 1996 reference month, though they have only appeared separately in this publication from the April 1998 issue. Prior to that issue, conversions were published as part of the 'Conversions, etc.' category or included elsewhere within a table. Prior to July 1996, table 5 includes the number of Conversions in the 'Alterations and additions to residential buildings' category while table 6 includes the value of Conversions in the 'Alterations and additions to residential buildings, creating dwellings' category. See also Explanatory Notes paragraph 12. |
| <b>Dwelling unit</b>                                      | A dwelling unit is a self-contained suite of rooms, including cooking and bathing facilities and intended for long-term residential use. Regardless of whether they are self-contained or not, units within buildings offering institutional care (e.g. hospitals) or temporary accommodation (e.g. motels, hostels and holiday apartments) are not defined as dwelling units. Such units are included in the appropriate category of non-residential building approvals. Dwelling units can be created in one of four ways: through new work to create a residential building; through alteration/addition work to an existing residential building; through either new or alteration/addition work on non-residential building or through conversion of a non-residential building to a residential building.  |
| <b>Educational</b>  | Includes schools, colleges, kindergartens, libraries, museums and universities.  |
| <b>Entertainment and recreational</b>                     | Includes clubs, cinemas, sport and recreation centres.   |
| <b>Factories</b>  | Includes paper mills, oil refinery buildings, brickworks and powerhouses.  |
| <b>Flats, units or apartments</b>                         | Dwellings not having their own private grounds and usually sharing a common entrance, foyer or stairwell.  |
| <b>Health</b>   | Includes hospitals, nursing homes, surgeries, clinics and medical centres.   |
| <b>Hotels, motels and other short term accommodation</b>  | Includes hostels, boarding houses, guest houses, and holiday apartment buildings.  |
| <b>House</b>  | A house is a detached building primarily used for long term residential purposes. It consists of one dwelling unit. For instance, detached 'granny flats' and detached dwelling units (e.g. caretaker's residences) associated with a non-residential building are defined as houses.  |

## GLOSSARY

|   |   |
|---|---|
| <b>Miscellaneous</b>                                    | Includes justice and defence buildings, welfare and charitable homes, prisons and reformatories, maintenance camps, farming and livestock buildings, veterinary clinics, child-minding centres, police stations and public toilets.   |
| <b>New building work</b>                                | Building activity which will result in the creation of a building which previously did not exist.   |
| <b>New other residential buildings</b>                  | Building activity which will result in the creation of a residential building other than a house, which previously did not exist.   |
| <b>New residential</b>                                  | Building activity which will result in the creation of any residential building (house or other residential) which previously did not exist.  |
| <b>Non-residential building</b>                         | A non-residential building is primarily intended for purposes other than long term residential purposes. Note that, on occasions, one or more dwelling units may be created through non-residential building activity. Prior to the April 1998 issue of this publication, they have been included in the 'Conversions, etc.' column in tables showing dwelling units approved. They are now identified separately (e.g. see table 5). However, the value of these dwelling units cannot be separated out from that of the non-residential building which they are part of, therefore the value associated with these remain in the appropriate Non-residential category.  |
| <b>Offices</b>  | Includes banks, post offices and council chambers.  |
| <b>Other business premises</b>                          | Includes warehouses, service stations, transport depots and terminals, electricity substation buildings, telephone exchanges, broadcasting and film studios.  |
| <b>Other dwellings</b>                                  | Includes all dwellings other than houses. They can be created by: the creation of new other residential buildings (e.g. flats); alteration/addition work to an existing residential building; either new or alteration/addition work on a non-residential building; conversion of a non-residential building to a residential building creating more than one dwelling unit.  |
| <b>Other residential building</b>                       | An other residential building is a building other than a house primarily used for long-term residential purposes. An other residential building contains more than one dwelling unit. Other residential buildings are coded to the following categories: semi-detached, row or terrace house or townhouse with one storey; semi-detached, row or terrace house or townhouse with two or more storeys; flat, unit or apartment in a building of one or two storeys; flat, unit or apartment in a building of three storeys; flat, unit or apartment in a building of four or more storeys; flat, unit or apartment attached to a house; other/number of storeys unknown. The latter two categories are included with the semi-detached, row or terrace house or townhouse with one storey category in table 7 of this publication. |
| <b>Religious</b>  | Includes convents, churches, temples, mosques, monasteries and noviciates.  |
| <b>Residential building</b>                             | A residential building is a building consisting of one or more dwelling units. Residential buildings can be either houses or other residential buildings.   |
| <b>Semi-detached, row or terrace houses, townhouses</b> | Dwellings having their own private grounds with no other dwellings above or below.  |
| <b>Shops</b>  | Includes retail shops, restaurants, taverns and shopping arcades.   |





## FOR MORE INFORMATION...

- INTERNET* **www.abs.gov.au** the ABS web site is the best place to start for access to summary data from our latest publications, information about the ABS, advice about upcoming releases, our catalogue, and Australia Now—a statistical profile.
- LIBRARY* A range of ABS publications is available from public and tertiary libraries Australia-wide. Contact your nearest library to determine whether it has the ABS statistics you require, or visit our web site for a list of libraries.
- CPI INFOLINE* For current and historical Consumer Price Index data, call 1902 981 074 (call cost 77c per minute).
- DIAL-A-STATISTIC* For the latest figures for National Accounts, Balance of Payments, Labour Force, Average Weekly Earnings, Estimated Resident Population and the Consumer Price Index call 1900 986 400 (call cost 77c per minute).

## INFORMATION SERVICE

Data which have been published and can be provided within five minutes are free of charge. Our information consultants can also help you to access the full range of ABS information—ABS user-pays services can be tailored to your needs, time frame and budget. Publications may be purchased. Specialists are on hand to help you with analytical or methodological advice.

- PHONE* **1300 135 070**
- EMAIL* **client.services@abs.gov.au**
- FAX* 1300 135 211
- POST* Client Services, ABS, GPO Box 796, Sydney 1041

## WHY NOT SUBSCRIBE?

ABS subscription services provide regular, convenient and prompt deliveries of ABS publications and products as they are released. Email delivery of monthly and quarterly publications is available.

- PHONE* 1300 366 323
- EMAIL* subscriptions@abs.gov.au
- FAX* 03 9615 7848
- POST* Subscription Services, ABS, GPO Box 2796Y, Melbourne 3001



2873120003019  
ISSN 1031-1998

RRP \$19.50